

Nevada Education QuickSTATS

**A Pocket Guide to Statistical and Graphical Information
About Nevada's K-12 Public Education System**



NEVADA DEPARTMENT of EDUCATION

Carson City Office
700 East Fifth Street
Carson City, Nevada 89701
Phone: 775.687.9200
FAX: 775.687.9101

Las Vegas Office
9890 South Maryland Parkway, Suite 221
Las Vegas, Nevada 89183
Phone: 702.486.6458
FAX: 702.486.6450

FEBRUARY 2009

NEVADA EDUCATION QUICKSTATS
Table of Contents

Nevada State Board of Education	1
Department Organizational Structure	2
Nevada School Districts and Superintendents	3-4
Common Abbreviations and Acronyms	5
The “Nevada Plan”	6
<u>Nevada Comparative Statistics:</u>	
Enrollments – School Districts and Charter Schools	7-8
Enrollments by School District and Grade	9-10
Enrollments by School District and Ethnicity	11-12
Teachers, Salaries, and Pupil-Teacher Ratios	13-14
Number of Schools and Average Pupils per School	15-16
Iowa Tests of Basic Skills (ITBS) – 4th Grade	17-18
Iowa Tests of Basic Skills (ITBS) – 7th Grade	19-20
Iowa Tests of Educational Development (ITED) –10th	21-22
Graduation and Dropout Rates	23-24
Special Education Enrollments and Teacher Units	25-26
Private, Charter, and Home Schooled Enrollments	27-28
<u>National Comparative Statistics:</u>	
Enrollment Growth by State	29-30
Pupil-Teacher Ratios by State	31-32
Current Expenditures per Pupil by State	33-34
Capital Expenditures per Pupil by State	35-36
Total Expenditures per Pupil by State	37-38

Nevada Department of Education
Internet Web Page: <http://www.doe.nv.gov>

**NEVADA STATE BOARD of EDUCATION
NEVADA STATE BOARD
for
CAREER AND TECHNICAL EDUCATION**

Members

Anthony Ruggiero [2], President
Dr. Cliff Ferry [10], Vice President
Chris Wallace [7], Clerk Jan Biggerstaff [6]
Gloria Bonaventura [1] Willia Chaney [3]
Dave Cook [9] Charlotte Hill [5]
Ken McKenna [8] Craig Wilkinson [4]
Becky Childs (Student Representative)

[] = District represented

Dr. Keith Rheault
Superintendent of Public Instruction
and Secretary to the Board

District Representation

The State Board of Education is comprised of ten members and a non-voting student representative: seven of the ten members are elected from Clark, Lincoln, and Nye counties (Districts 1 through 7); one member is elected from Washoe County (District 8); and two members are elected from the remaining thirteen counties of the state (Districts 9 and 10). Members are elected on a non-partisan ballot for four-year terms and are limited to three consecutive terms.

NEVADA DEPARTMENT of EDUCATION
Organizational Structure

Keith Rheault
Superintendent of Public Instruction

Gloria Dopf, Deputy Superintendent
Instructional, Research and Evaluative Services

- Assessments, Program Accountability and Curriculum
Assessment
Program Accountability
Curriculum Development
- Career, Technical, and Adult Education
- Special Education, ESEA and School Improvement
Special Education
Elementary and Secondary Education Act (ESEA)
School Improvement
- Teacher Licensure
- Technology and Innovative Programs

James Wells, Deputy Superintendent
Administrative and Fiscal Services

- Child Nutrition and School Health
- Fiscal Accountability
- Fiscal Services
- Department Operations

NEVADA SCHOOL DISTRICTS and SUPERINTENDENTS

Carson City School District, Mr. Richard Stokes

P.O. Box 603, Carson City, NV 89702
Phone 775.283.2100 / FAX 775.283.2090

Churchill County School District, Dr. Carolyn Ross

545 East Richards Street, Fallon, NV 89406
Phone 775.423.5184 / FAX 775.423.2959

Clark County School District, Dr. Walt Rulfes

5100 West Sahara Avenue, Las Vegas, NV 89146
Phone 702.799.5310 / FAX 702.799.5125

Douglas County School District, Mrs. Carol Lark

P.O. Box 1888, Minden, NV 89423
Phone 775.782.5134 / FAX 775.782.3162

Elko County School District, Mrs. Antoinette Cavanaugh

P.O. Box 1012, Elko, NV 89803
Phone 775.738.5196 / FAX 775.738.5857

Esmeralda County School District, Mr. Robert Aumaugher

P.O. Box 560, Goldfield, NV 89013
Phone 775.485.6382 / FAX 775.485.3511

Eureka County School District, Mr. Ben Zunino

P.O. Box 249, Eureka, NV 89316
Phone 775.237.5373 / FAX 775.237.5014

Humboldt County School District, Mr. Mike Bumgartner

310 East Fourth Street, Winnemucca, NV 89445
Phone 775.623.8100 / FAX 775.623.8102

Lander County School District, Mr. Curtis Jordan

P.O. Box 1300, Battle Mountain, NV 89820
Phone 775.635-2886 / FAX 775.635.5347

NEVADA SCHOOL DISTRICTS and SUPERINTENDENTS
(Continued)

Lincoln County School District, Ms. Nykki Holton

P.O. Box 118, Panaca, NV 89042
Phone 775.728.4471 / FAX 775.728.4435

Lyon County School District, Ms. Caroline McIntosh

25 East Goldfield Avenue, Yerington, NV 89447
Phone 775.463.6800 / FAX 775.463.6808

Mineral County School District, Dr. Paul (“Hank”) Kirk

P.O. Box 1540, Hawthorne, NV 89415
Phone 775.945.2403 / FAX 775.945.3709

Nye County School District, Dr. William (“Rob”) Roberts

P.O. Box 113, Tonopah, NV 89049
Phone 775.482.6258 / FAX 775.482.8573

Pershing County School District, Mr. Daniel Fox

P.O. Box 389, Lovelock, NV 89419
Phone 775.273.7819 / FAX 775.273.2668

Storey County School District, Dr. Robert (“Rob”) Slaby

P.O. Box C, Virginia City, NV 89440
Phone 775.847.0983 / FAX 775.847.0989

Washoe County School District, Mr. Paul Dugan

P.O. Box 30425, Reno, NV 89520-3425
Phone 775.348.0200 / FAX 775.348.0304

White Pine County School District, Mr. Robert Dolezal

1135 Avenue C, Ely, NV 89301-2331
Phone 775.289.4851 / FAX 775.289.3999

COMMON ABBREVIATIONS and ACRONYMS

ACT	American College Test
AFT	American Federation of Teachers
AYP	Adequate Yearly Progress (NCLB)
CSR	Class Size Reduction
CRT	Criterion-Referenced Test
DSA	Distributive School Account
ELL	English Language Learners
ESEA	Elementary and Secondary Education Act
ETS	Educational Testing Service
FAPE	Free Appropriate Public Education
FRL	Free and Reduced-Price Lunch (program)
GTE	Gifted and Talented Education
HSPE	High School Proficiency Examination
IDEA	Individuals with Disabilities Education Act
IEP	Individualized Education Program
ITBS	Iowa Tests of Basic Skills
ITED	Iowa Tests of Educational Development
LEA	Local Education Agency (e.g., a Nevada school district)
LEP	Limited English Proficient
NASB	Nevada Association of School Boards
NASS	Nevada Association of School Superintendents
NCES	National Center for Education Statistics
NCLB	No Child Left Behind (Act)
NDE	Nevada Department of Education
NEA	National Education Association
NPEP	Nevada Proficiency Examination Program
NRT	Norm-Referenced Test
SAIN	System of Accountability Information for Nevada
SASI	School Administration Student Information
SAT	Scholastic Aptitude Test
SEA	State Education Association (e.g., NDE)

THE “NEVADA PLAN”

Nevada Revised Statutes (NRS) 387.121 Guaranteed per Student Level of Financial Support Summary (Emphasized) and Full Statute

“The legislature declares ... objective of state financial aid ... ***ensure each Nevada child*** [receives] a ***reasonably equal educational opportunity*** ... ***Recognizing*** wide ***local variation in wealth and costs per pupil*** ... state should ***supplement local financial ability*** ... in each school district to provide programs of instruction ... that offer full opportunity ... to receive the benefit of the purposes for which public schools are maintained ... ***state’s financial obligation*** ... ***expressed in formula*** partially on a ***per pupil basis*** and partially on a ***per program basis*** ...”

NRS 387.121 Legislative Declaration; Nevada Plan. The legislature declares that the proper objective of state financial aid to public education is to ensure each Nevada child a reasonably equal educational opportunity. Recognizing wide local variations in wealth and costs per pupil, this state should supplement local financial ability to whatever extent necessary in each school district to provide programs of instruction in both compulsory and elective subjects that offer full opportunity for every Nevada child to receive the benefit of the purposes for which public schools are maintained. Therefore, the quintessence of the state’s financial obligation for such programs can be expressed in a formula partially on a per pupil basis and partially on a per program basis as: State financial aid to school districts equals the difference between school district basic support guarantee and local available funds produced by mandatory taxes minus all the local funds attributable to pupils who reside in the county but attend a charter school. This formula is designated the Nevada Plan.

SCHOOL DISTRICT and CHARTER SCHOOL ENROLLMENTS
For FY2009 (School Year 2008-2009)

School Districts and Charter Schools*	FY2009 Full Enrollment	FY2009 Weighted Enrollment	FY2009 Apportionment Enrollment
CARSON CITY SCHOOL DISTRICT	8,010	7,746.8	7,746.8
Carson Montessori School***	146	136.0	136.0
Silver State High School** ***	419	419.0	419.0
CHURCHILL COUNTY SCHOOL DISTRICT	4,352	4,199.2	4,199.2
CLARK COUNTY SCHOOL DISTRICT	311,240	300,857.2	300,835.2
Andre Agassi College Preparatory Academy	589	573.4	573.4
Coral Academy of Science-Las Vegas**	297	297.0	297.0
Explore Knowledge Academy	509	487.8	487.8
Imagine School in the Valle**	248	218.4	218.4
Innovations International	709	674.2	674.2
Insight School of Nevada** ***	340	340.0	340.0
Las Vegas School of the Deaf	2	1.6	1.6
Nevada State High School**	239	239.0	239.0
Nevada Virtual Academy** ***	721	708.2	708.2
Odyssey Charter Schools	1,430	1,414.4	1,414.4
100 Academy of Excellence	601	573.0	573.0
Rainbow Dreams Academy	145	127.4	127.4
WestCare Charter School	125	125.0	125.0
DOUGLAS COUNTY	6,548	6,361.2	6,319.2
Sierra Crest Academy***	63	63.0	63.0
ELKO COUNTY SCHOOL DISTRICT	9,669	9,372.6	9,321.6
ESMERALDA COUNTY SCHOOL DISTRICT	68	65.6	62.6
EUREKA COUNTY SCHOOL DISTRICT	242	236.4	236.4
HUMBOLDT COUNTY SCHOOL DISTRICT	3,336	3,220.0	3,207.0
LANDER COUNTY SCHOOL DISTRICT	1,193	1,146.6	1,146.6
LINCOLN COUNTY SCHOOL DISTRICT	991	963.8	963.8
LYON COUNTY SCHOOL DISTRICT	8,937	8,623.8	8,623.8
MINERAL COUNTY SCHOOL DISTRICT	574	556.4	558.4
NYE COUNTY SCHOOL DISTRICT	6,348	6,142.0	6,140.0
PERSHING COUNTY SCHOOL DISTRICT	714	688.4	688.4
STOREY COUNTY SCHOOL DISTRICT	435	419.8	419.8

SCHOOL DISTRICT and CHARTER SCHOOL ENROLLMENTS
For FY2009 (School Year 2008-2009)
(Continued)

School Districts and Charter Schools*	FY2009 Full Enrollment	FY2009 Weighted Enrollment	FY2009 Apportionment Enrollment
WASHOE COUNTY SCHOOL DISTRICT	63,310	61,310	61,319
Academy for Career Education (Charter)***	158	158.0	158.0
Bailey Charter Elementary School	259	240.6	240.6
Coral Academy of Science-Reno***	726	713.2	713.2
High Desert Montessori School (Charter)***	227	215.0	215.0
I Can Do Anything Charter High School	371	371.0	371.0
Mariposa Academy of Language and Learning	163	147.8	147.8
Nevada Connections Academy** ***	934	926.0	926.0
Rainshadow Community Charter High School	125	125.0	125.0
Sierra Nevada Academy	183	172.2	172.2
The Davidson Academy (University School)	70	70.0	70.0
WHITE PINE COUNTY SCHOOL DISTRICT	1,432	1,378	1,398
NEVADA TOTALS	437,198	422,824.0	422,721.6

* School district pupil enrollments exclude charter schools, which are listed separately. Charter schools are listed with their sponsoring school district or with the school district of their head office.

** Denotes a State Board of Education sponsored charter school.

*** Denotes a "multi-district" charter school, i.e., a charter school with pupils residing in more than one school district; includes the charter school's total pupil enrollment irrespective of county (school district) of residence.

Full Enrollment: The total pupil count in public schools in all grades, including pre-kindergarten (pre-K), kindergarten (K), and grades 1 through 12, inclusive (K-12), as well as ungraded pupils. Ungraded pupils refers to pupils who are enrolled in non-graded classes in a school for special education or pupils who cannot be assigned to a particular grade because of special circumstances.

Weighted Enrollment: Based on NRS 387.1233(1)(a), the weighted pupil enrollment is the total count of pupils (i.e., the full enrollment determined above), with pre-K and K pupils weighted at 60% of their full enrollment count. Weighted enrollment includes ungraded pupils, but excludes net pupil transfers (i.e., pupil transfers out minus transfers in) as described in the definition of weighted apportionment enrollment, below.

Weighted Apportionment Enrollment: Represents the weighted pupil enrollment adjusted to include net pupil transfers, that is, pupil transfers out of a school district minus pupil transfers in. Pupil transfers are only counted between other adjoining states, not between other school districts within Nevada. The weighted apportionment enrollment count is used to calculate the total basic support per pupil, or the "Nevada Plan" guarantee funding (NRS 387.121), for a given school year.

**School District Count Day Enrollments by Grade
For FY2009 (School Year 2008-2009)**

School Districts	Pre-K and K	Elementary Grades 1-6	Secondary Grades 7-12	Ungraded	Total
Carson City	683	3,731	3,742	-	8,156
Churchill County	382	1,960	2,010	-	4,352
Clark County	26,290	149,068	139,448	544	315,350
Douglas County	467	2,880	3,249	15	6,611
Elko County	741	4,441	4,470	17	9,669
Esmeralda County	6	47	15	-	68
Eureka County	14	100	125	3	242
Humboldt County	290	1,537	1,509	-	3,336
Lander County	116	472	605	-	1,193
Lincoln County	68	404	519	-	991
Lyon County	783	4,115	4,035	4	8,937
Mineral County	44	256	274	-	574
Nye County	515	2,813	3,020	-	6,348
Pershing County	64	339	308	3	714
Storey County	38	163	234	-	435
Washoe County	5,173	30,535	29,745	69	65,522
White Pine County	135	617	680	-	1,432
State Board Charters	126	1,040	2,337	-	3,503
Nevada Totals	35,809	204,518	196,325	655	437,433

Note: School district enrollments include all charter school pupils attending within the district.

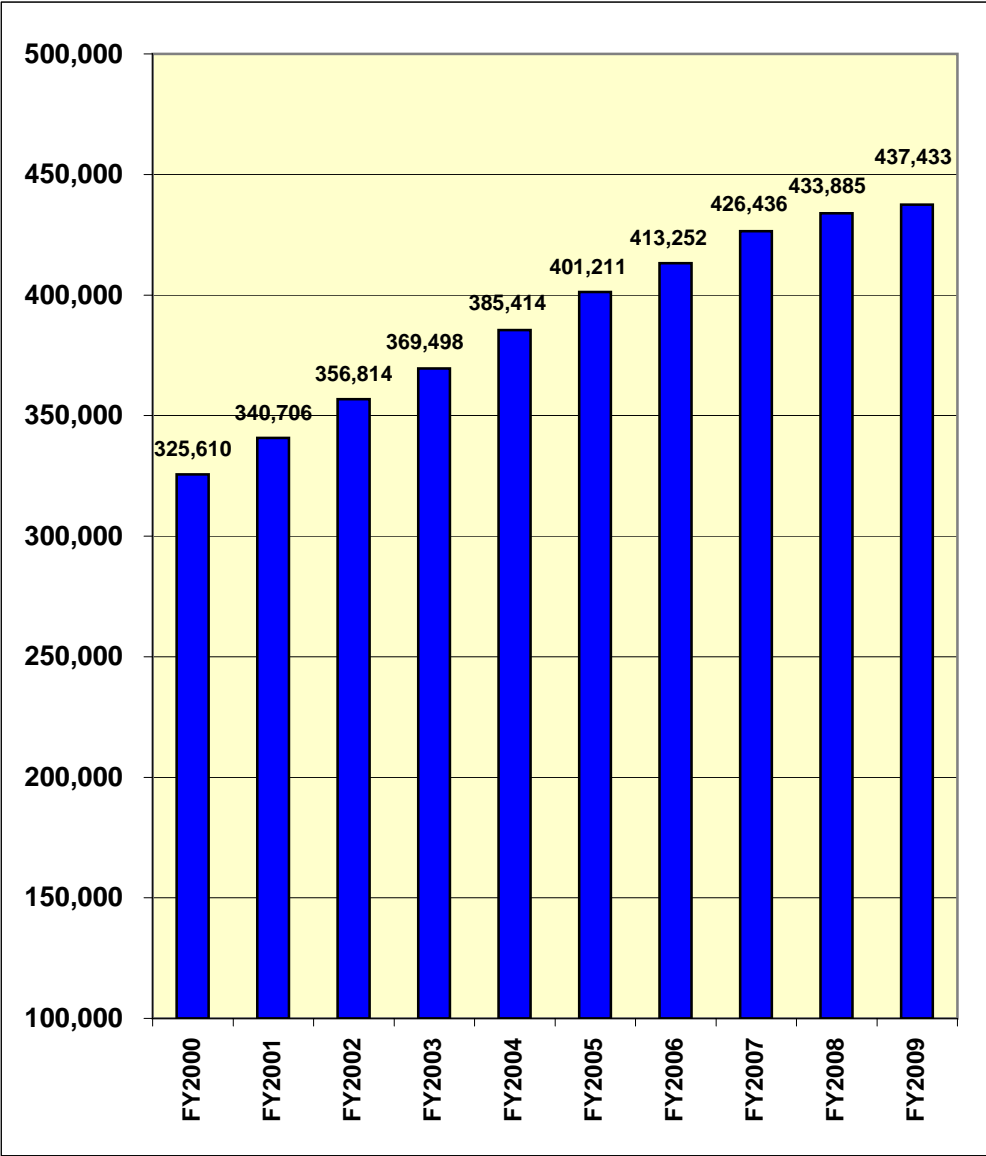
Enrollments: Pre-K (pre-Kindergarten) refers to 3- and 4-year old children receiving special education (NRS 388.490); Elementary includes grades 1-6; Secondary includes grades 7-12.

Ungraded: Pupils who are enrolled in non-graded classes for special education or pupils who cannot be assigned to a particular grade because of the nature of his or her condition (NAC 387.111).

Table and Graph Note: Enrollments reflect reported "count day" enrollments and may differ slightly from the tables on pages 7 and 8, which are based on revised figures for DSA payments.

Source: Nevada Department of Education (NDE), Research Bulletin.

Nevada Count Day Enrollments by School Year



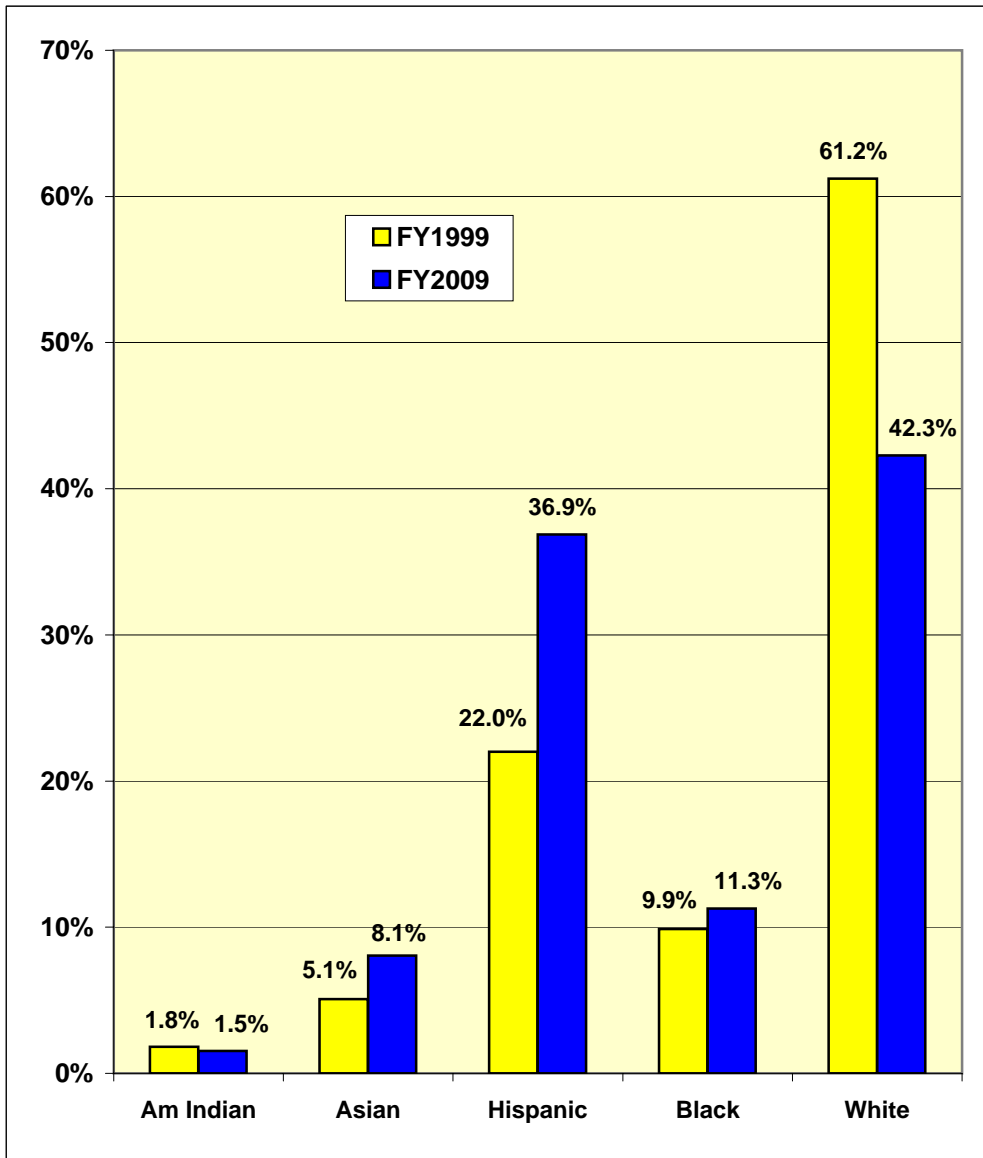
**School District Enrollments by Ethnicity
For FY2009 (School Year 2008-2009)**

School Districts	American Indian or Alaskan Native	Asian or Pacific Islander	Hispanic	Black	White	Total
Carson City	250	239	2,768	113	4,786	8,156
Churchill County	316	217	658	113	3,048	4,352
Clark County	2,460	29,552	126,685	45,386	111,267	315,350
Douglas County	254	201	1,017	86	5,053	6,611
Elko County	623	112	2,659	91	6,184	9,669
Esmeralda County	3	1	19	1	44	68
Eureka County	13	3	34	-	192	242
Humboldt County	154	36	1,008	19	2,119	3,336
Lander County	81	6	288	15	803	1,193
Lincoln County	24	27	90	47	803	991
Lyon County	384	199	1,867	189	6,298	8,937
Mineral County	105	6	49	59	355	574
Nye County	153	165	1,428	235	4,367	6,348
Pershing County	57	18	205	6	428	714
Storey County	5	9	33	9	379	435
Washoe County	1,613	4,266	21,819	2,500	35,324	65,522
White Pine County	91	20	172	18	1,131	1,432
State Board Charters	97	180	480	412	2,334	3,503
Nevada Totals	6,683	35,257	161,279	49,299	184,915	437,433
Percent Total	1.5%	8.1%	36.9%	11.3%	42.3%	100.0%

Note: School district enrollments include charter schools except State Board charters.

Source: Nevada Department of Education (NDE), Administrative and Fiscal Services.

Nevada Comparative Enrollments by Ethnicity



**School District FTE Licensed Teacher Positions
Teachers and Average Salaries for FY2009**

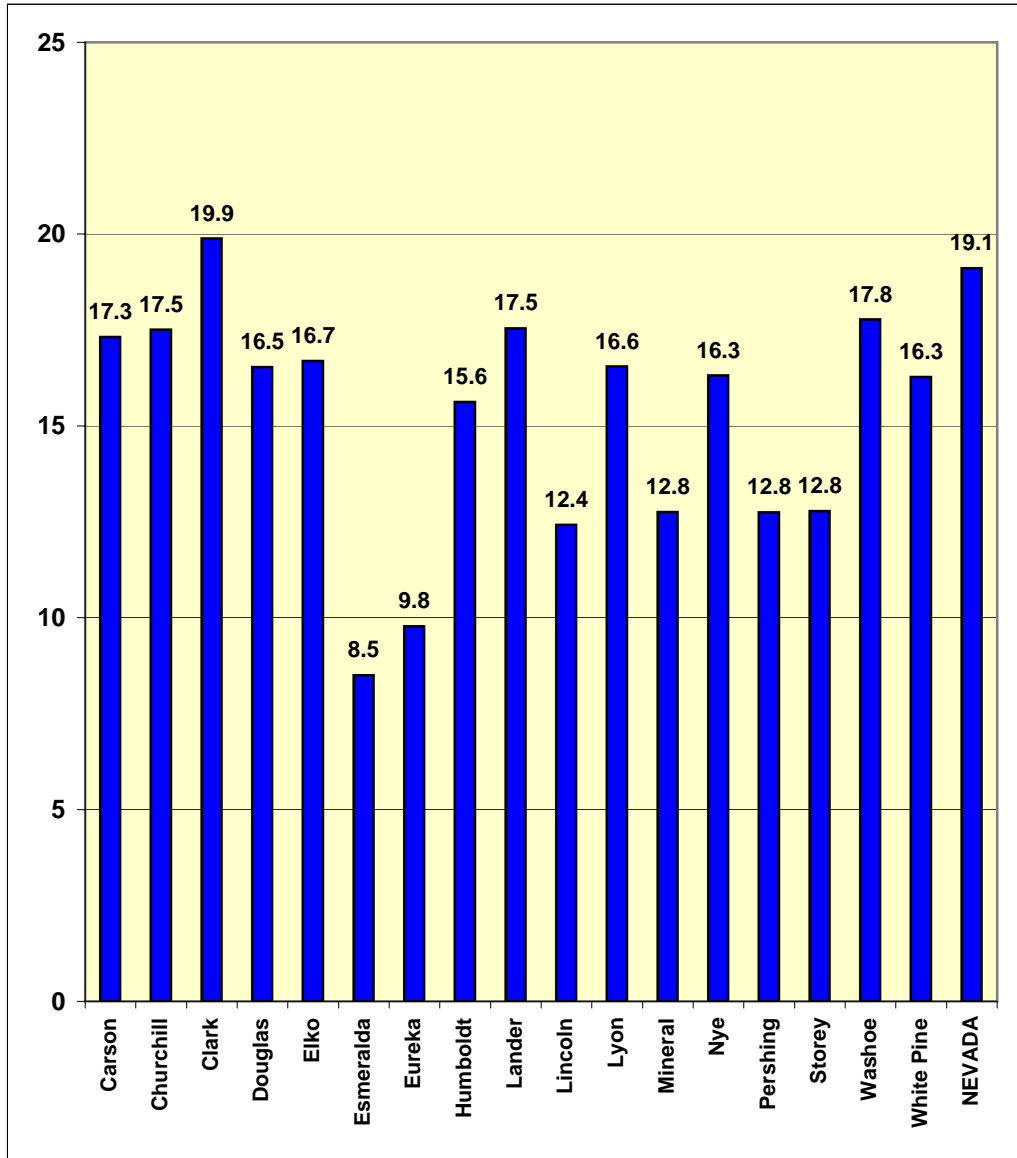
Classification	Elementary		Secondary		Total Teaching	
	FTEs	Average Salary	FTEs	Average Salary	FTEs	Average Salary
Carson City	235	\$ 54,102	154	\$ 51,830	471	\$ 51,220
Churchill County	121	54,942	78	53,042	249	53,873
Clark County	7,990	50,021	5,173	50,305	15,856	50,623
Douglas County	171	53,564	158	51,651	400	52,366
Elko County	278	53,547	196	53,715	579	53,473
Esmeralda County	7	51,875	-	-	8	51,944
Eureka County	10	71,710	9	66,921	25	67,869
Humboldt County	108	55,043	64	58,294	214	56,449
Lander County	27	58,887	26	56,937	68	56,185
Lincoln County	29	53,436	32	54,640	80	54,380
Lyon County	254	49,840	202	49,917	540	49,933
Mineral County	19	48,731	16	49,841	45	48,974
Nye County	173	54,077	141	53,593	389	53,827
Pershing County	25	56,358	16	60,331	56	56,831
Storey County	10	55,925	17	59,231	34	58,411
Washoe County	1,888	52,058	1,173	51,144	3,686	51,552
White Pine County	40	46,967	29	49,393	88	48,875
State Board Charters	47	37,959	38	47,102	98	42,167
Nevada Totals	11,432	\$ 50,681	7,521	\$ 50,813	22,886	\$ 51,045

Note: Full-time equivalent (FTE) teaching positions rounded to nearest whole number. Total positions include elementary and secondary teachers, as well as special education and occupational teachers.

Salaries: The average salaries exclude the 9.875% employee portion of the personnel employees retirement contribution, which is paid by the local school districts on behalf of their employees.

Source: Nevada Department of Education (NDE), Administrative and Fiscal Services.

FY2009 Pupil-Teacher Ratios



**School District Number of Public Schools
For FY2009 (School Year 2008-2009)**

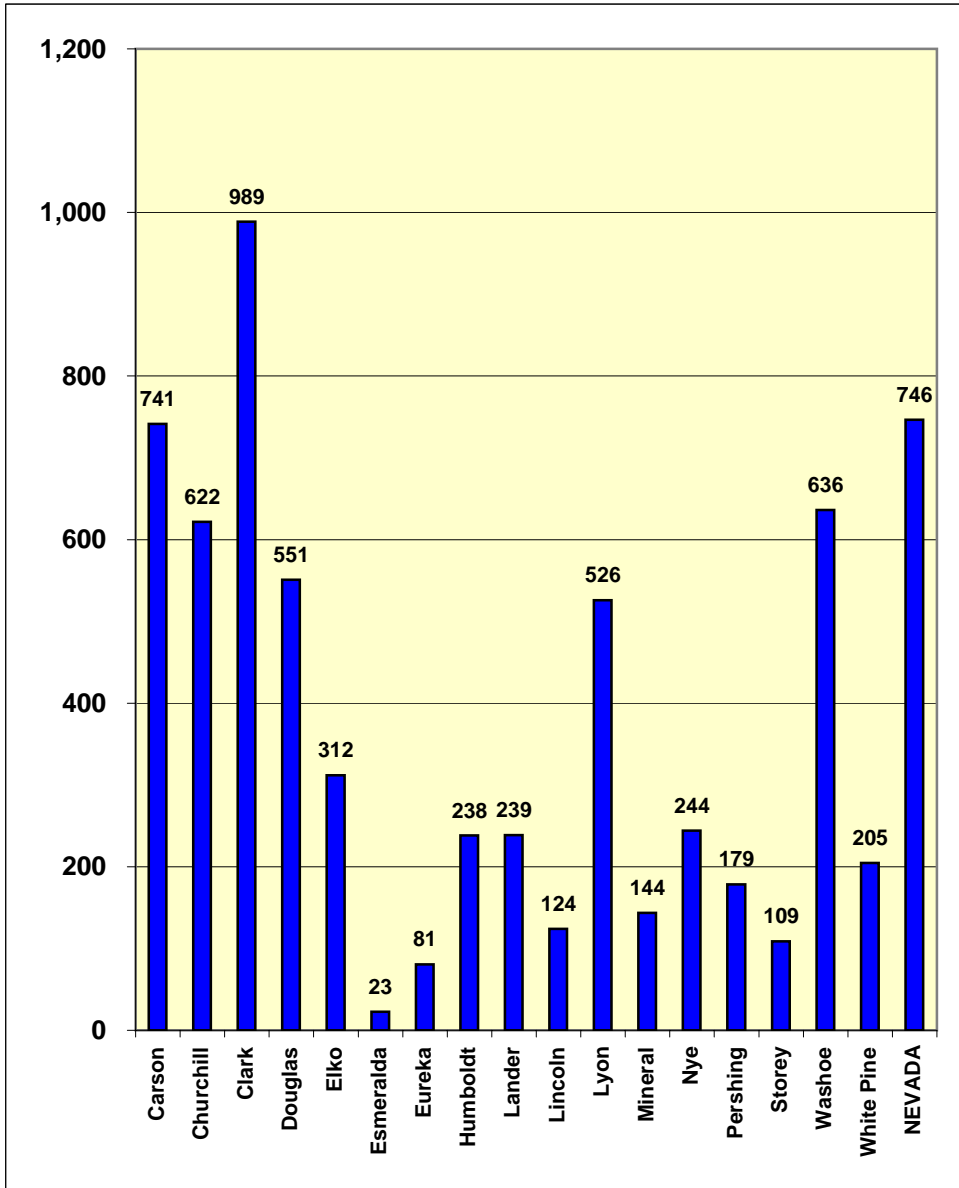
School Districts	Elementary Schools	Junior and Middle Schools	High Schools	Special and Charter Schools	Total Schools
Carson City	7	2	1	4	14
Churchill County	5	1	1	2	9
Clark County	210	56	37	29	332
Douglas County	7	2	2	4	15
Elko County	16	8	7	1	32
Esmeralda County	3	-	-	-	3
Eureka County	2	-	1	-	3
Humboldt County	10	2	2	1	15
Lander County	2	1	1	1	5
Lincoln County	4	2	2	1	9
Lyon County	8	4	4	2	18
Mineral County	2	1	1	1	5
Nye County	12	8	6	-	26
Pershing County	2	1	1	-	4
Storey County	2	1	1	-	4
Washoe County	63	16	15	9	103
White Pine County	4	1	2	1	8
State Board Charters	1	2	5	-	8
Nevada Totals	360	108	89	56	613

Note: Charter schools are included with sponsoring school district or county of head office.

Graph Note: Accompanying graph is based on the school districts' full enrollments for all grades divided by the total number of district schools, including charters but omitting special schools.

Source: Nevada Department of Education (NDE), Administrative and Fiscal Services.

FY2009 Average Number Pupils per School



Iowa Tests of Basic Skills (ITBS)

4th Grade Spring 2008 Test Results (Norm = 50th Percentile)

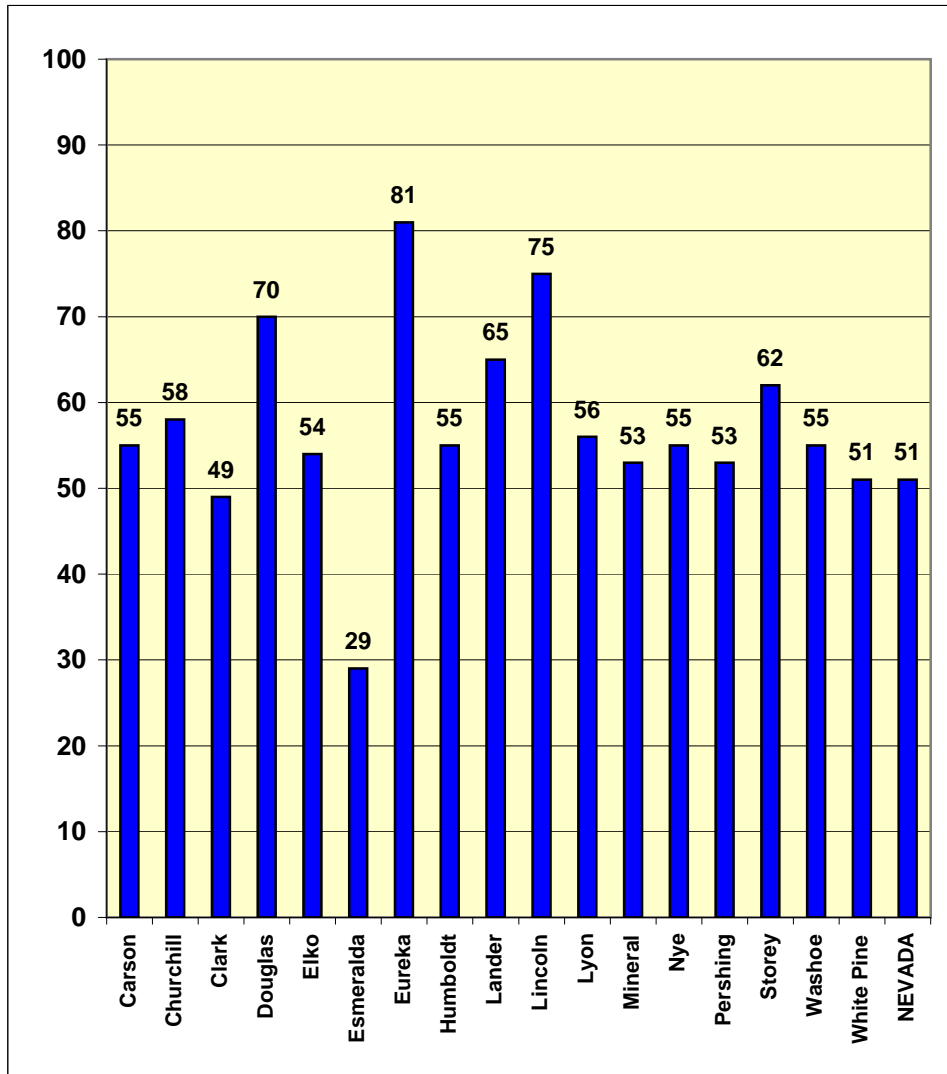
School Districts	Nevada/National Percentile Rank Comparisons			
	Reading	Language	Math	Science
Carson City	55	59	59	62
Churchill County	58	58	60	66
Clark County	49	54	55	54
Douglas County	70	73	68	71
Elko County	54	54	54	60
Esmeralda County	29	52	41	39
Eureka County	81	85	77	78
Humboldt County	55	60	57	59
Lander County	65	64	69	70
Lincoln County	75	76	75	75
Lyon County	56	55	54	60
Mineral County	53	54	44	51
Nye County	55	60	57	63
Pershing County	53	53	57	64
Storey County	62	48	59	68
Washoe County	55	56	59	61
White Pine County	51	43	51	52
Nevada Average	51	55	56	57
National Norm	50	50	50	50

The ITBS is a set of norm-referenced tests (NRT) which compare the performance of pupils with that of a national norming sample. The tests measure academic performance in reading, language arts, mathematics, and science. Scoring is based on a normal distribution of scores generated by the original norming sample. Thus, each year, pupils who take the tests are compared against pupils who were involved in the initial administrations that were used to set the scoring tables.

Note: Charter school test results are included within the respective school district averages.

Source: Nevada Department of Education (NDE), Office of Assessments, Program Accountability and Curriculum.

**Iowa Tests of Basic Skills (ITBS)
4th Grade Spring 2008 Reading Test Results
(National Norm = 50th Percentile)**



Iowa Tests of Basic Skills (ITBS)
7th Grade Spring 2008 Test Results (Norm = 50th Percentile)

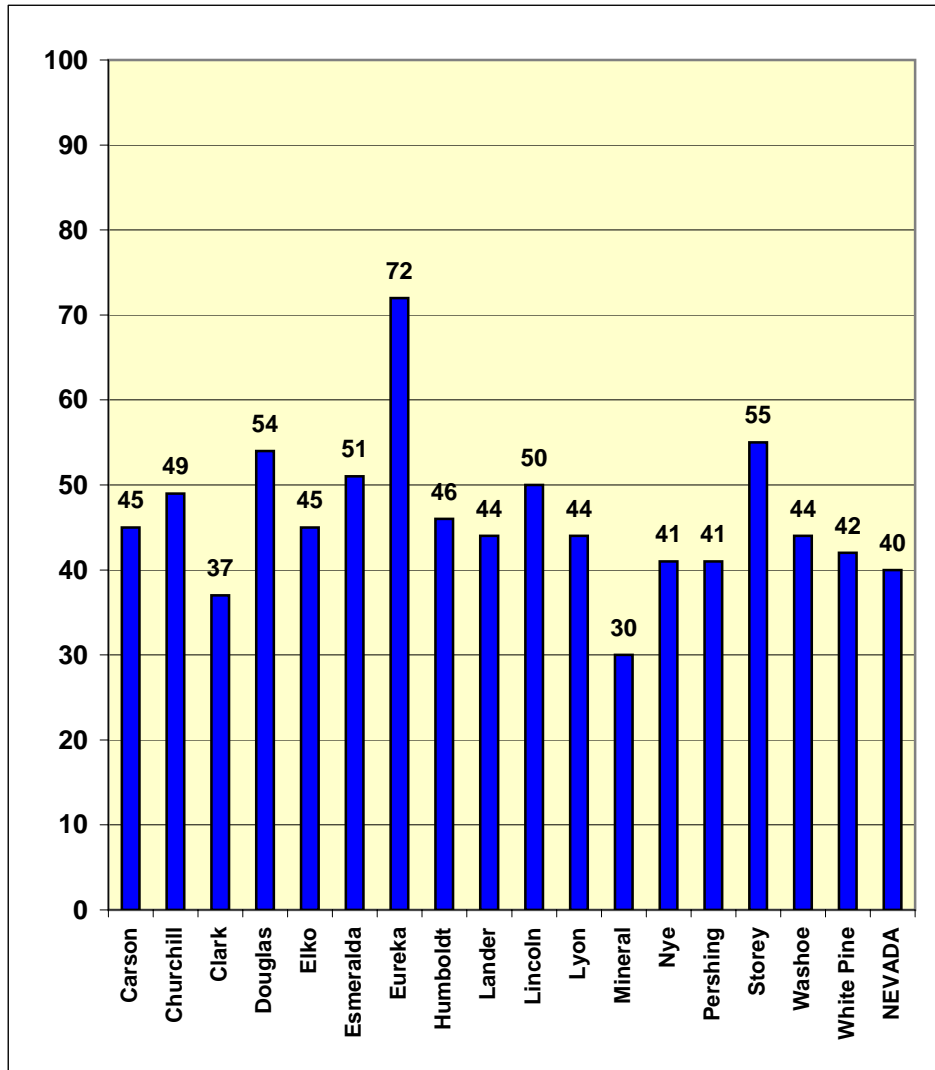
School Districts	Nevada/National Percentile Rank Comparisons			
	Reading	Language	Math	Science
Carson City	45	46	49	54
Churchill County	49	49	51	58
Clark County	37	43	44	43
Douglas County	54	53	57	63
Elko County	45	47	50	55
Esmeralda County	51	47	63	63
Eureka County	72	67	72	70
Humboldt County	46	42	52	58
Lander County	44	47	46	56
Lincoln County	50	56	56	59
Lyon County	44	46	44	53
Mineral County	30	35	47	49
Nye County	41	40	40	50
Pershing County	41	41	47	52
Storey County	55	50	50	62
Washoe County	44	45	49	54
White Pine County	42	38	47	51
Nevada Average	40	44	45	47
National Norm	50	50	50	50

The ITBS is a set of norm-referenced tests (NRT) which compare the performance of pupils with that of a national norming sample. The tests measure academic performance in reading, language arts, mathematics, and science. Scoring is based on a normal distribution of scores generated by the original norming sample. Thus, each year, pupils who take the tests are compared against pupils who were involved in the initial administrations that were used to set the scoring tables.

Note: Charter school test results are included within the respective school district averages.

Source: Nevada Department of Education (NDE), Office of Assessments, Program Accountability and Curriculum.

**Iowa Tests of Basic Skills (ITBS)
7th Grade Spring 2008 Reading Test Results
(National Norm = 50th Percentile)**



Iowa Tests of Educational Development (ITED)
10th Grade Spring 2008 Test Results (Norm = 50th Percentile)

School Districts	Nevada/National Percentile Rank Comparisons			
	Reading	Language	Math	Science
Carson City	50	45	51	46
Churchill County	55	47	51	59
Clark County	39	41	39	37
Douglas County	60	53	53	63
Elko County	47	46	48	52
Esmeralda County*	N/A	N/A	N/A	N/A
Eureka County	47	51	55	61
Humboldt County	45	40	44	48
Lander County	51	48	49	50
Lincoln County	46	39	40	47
Lyon County	48	44	43	52
Mineral County	35	34	40	35
Nye County	45	43	38	40
Pershing County	46	44	46	46
Storey County	68	56	53	68
Washoe County	48	46	47	50
White Pine County	42	38	42	50
Nevada Average	42	42	42	41
National Norm	50	50	50	50

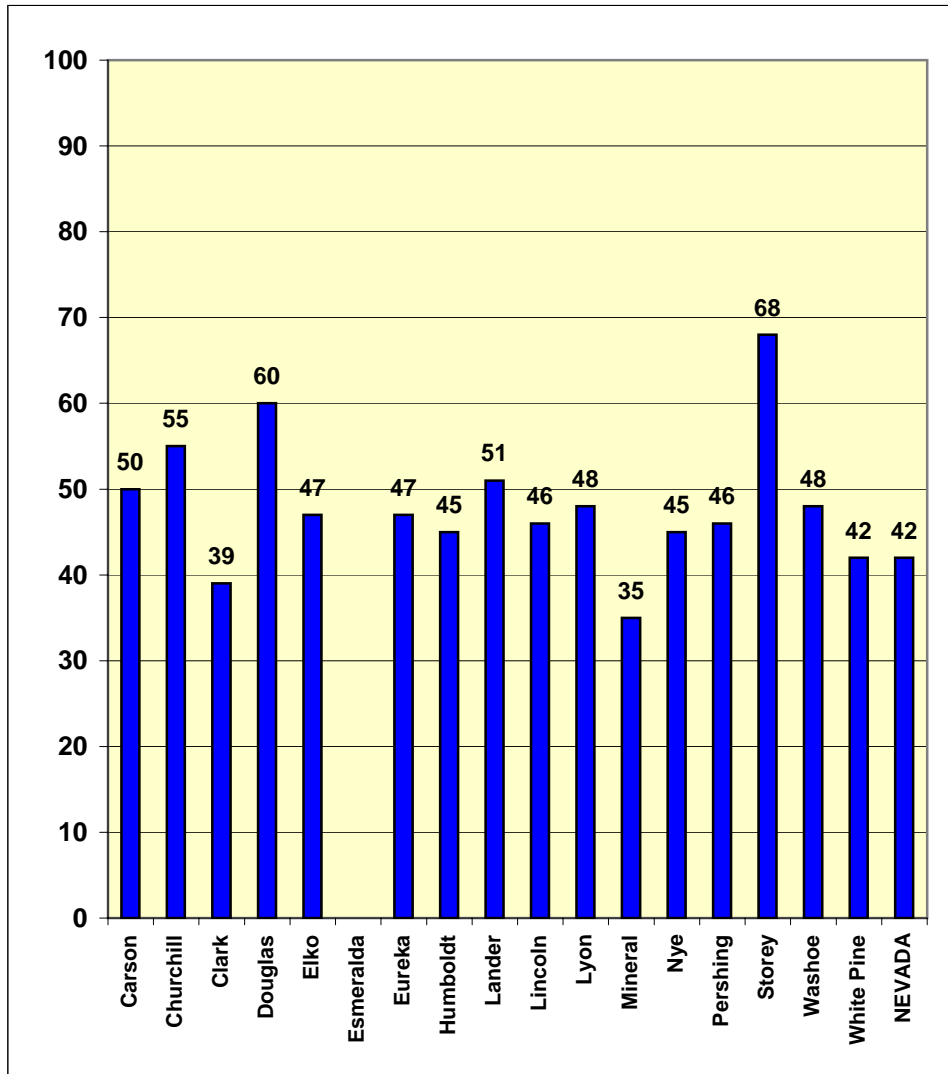
The ITED is a set of norm-referenced tests (NRT) which compare the performance of pupils with that of a national norming sample. The tests measure academic performance in reading, language arts, mathematics, and science. Scoring is based on a normal distribution of scores generated by the original norming sample. Thus, each year, pupils who take the tests are compared against pupils who were involved in the initial administrations that were used to set the scoring tables.

Note: Charter school test results are included within the respective school district averages.

* Esmeralda County School District has no grade 9-12 schools.

Source: Nevada Department of Education (NDE), Office of Assessments, Program Accountability and Curriculum.

Iowa Tests of Educational Development (ITED)
10th Grade Spring 2008 Reading Test Results
(National Norm = 50th Percentile)



**Graduation and Dropout Rates
For FY2007 (School Year 2006-2007)**

School Districts	Students Graduated	Graduation Rate	Students Dropped Out	Dropout Rate
Carson City	422	83.6%	37	0.8%
Churchill County	327	82.6%	44	3.0%
Clark County	13,031	63.0%	5,288	6.0%
Douglas County	454	85.8%	115	4.6%
Elko County	557	79.0%	35	1.2%
Esmeralda County	N/A	N/A	N/A	N/A
Eureka County	16	88.2%	1	1.3%
Humboldt County	191	76.1%	2	0.2%
Lander County	86	77.0%	10	1.1%
Lincoln County	65	89.2%	0	0.0%
Lyon County	470	78.7%	20	0.8%
Mineral County	36	65.3%	10	4.7%
Nye County	296	60.4%	34	1.9%
Pershing County	52	84.9%	1	0.4%
Storey County	35	97.2%	9	5.8%
Washoe County	3,191	77.9%	543	2.8%
White Pine County	99	83.2%	5	1.1%
State Board Charters	114	87.5%	16	2.2%
Nevada Totals	19,630	67.4%	6,170	4.8%

Notes: Esmeralda County School District does not have any 9-12 grade schools. Data is for school year ended June 30, 2007.

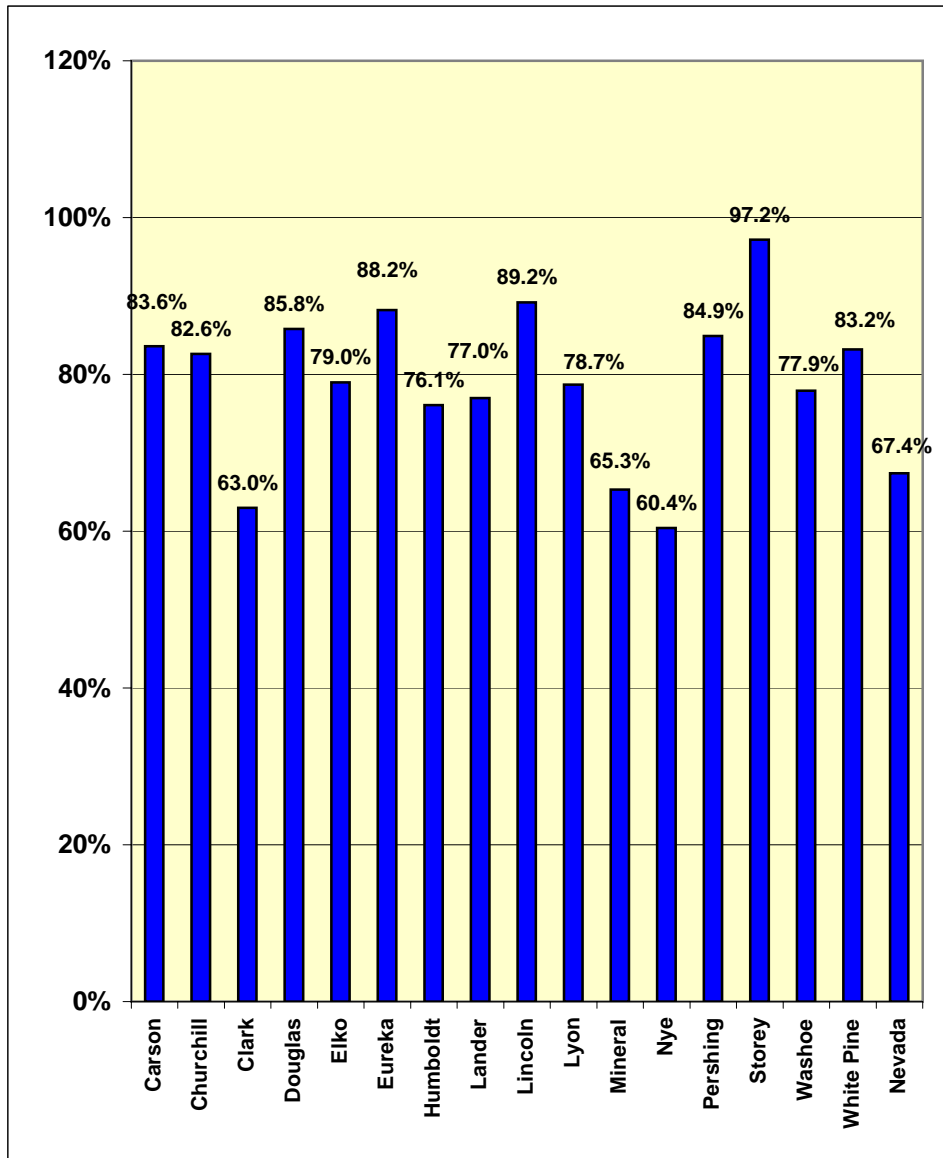
Graduation Rate = The number of graduates (Standard, Advanced and Adult Diplomas) divided by the number of completers plus the number of dropouts per year for grades 9-12.

Dropouts = Pupils in grades 9-12 who had withdrawn from school after the first day of fall enrollment, or who had completed the previous school year, but did not return for the start of the new school year (the latter category being referred to as "non-returns").

Dropout Rate = The number of dropouts plus total non-returns divided by fall total pupil enrollment plus total non-returns.

Source: Nevada Department of Education (NDE), Assessments and Program Accountability.

FY2007 Graduation Rates



**FY2009 Special Education Enrollments
Student Enrollments and Teacher Unit Allocations**

School Districts	Total Special Education Student Enrollment	Percent Shares of Total Special Education Students	Special Education Teacher Regular/ Discret. Units*	Percent Shares of Special Education Teacher Units	Gifted and Talented** Student Enrollment
Carson City	1,008	2.1%	84.00	2.7%	555
Churchill	654	1.4%	49.00	1.6%	91
Clark	32,441	67.1%	1,989.50	63.7%	6,260
Douglas	775	1.6%	73.00	2.3%	178
Elko	1,106	2.3%	86.00	2.8%	167
Esmeralda	8	0.0%	1.00	0.0%	-
Eureka	20	0.0%	3.00	0.1%	-
Humboldt	436	0.9%	32.00	1.0%	-
Lander	115	0.2%	14.00	0.4%	-
Lincoln	98	0.2%	18.25	0.6%	-
Lyon	1,223	2.5%	64.00	2.0%	177
Mineral	90	0.2%	13.00	0.4%	4
Nye	1,071	2.2%	59.00	1.9%	-
Pershing	118	0.2%	17.00	0.5%	6
Storey	87	0.2%	8.00	0.3%	9
Washoe	8,581	17.8%	590.50	18.9%	2,154
White Pine	215	0.4%	16.00	0.5%	-
Charters/NYTC	282	0.6%	5.00	0.2%	72
State Totals	48,328	100.0%	3,122.25	100.0%	9,673

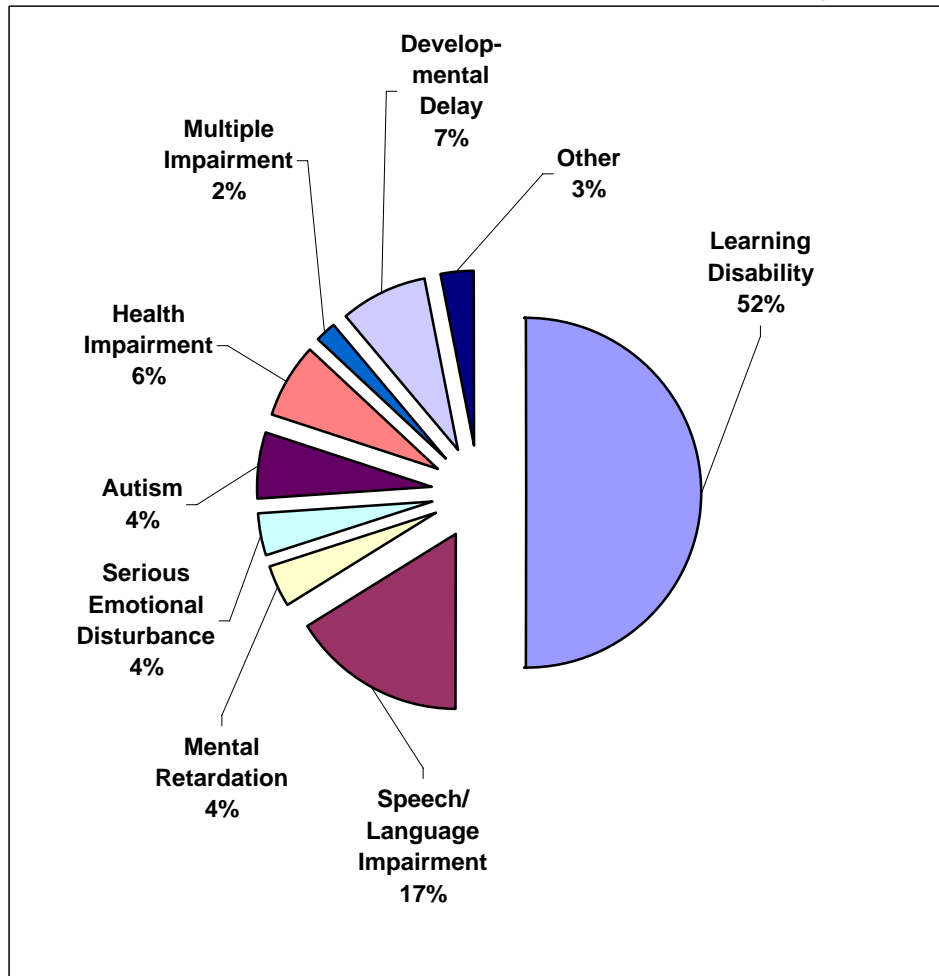
* For FY2009, 3,088 regular units and 40 discretionary units (3,128 total), with 29.25 discretionary units awarded to districts, 5 units to State sponsored charter schools, and 5.75 units to be awarded.

** **Gifted and Talented:** Students possessing or demonstrating outstanding ability in one or more of the following: general intelligence; academic aptitude in a specific area; creative thinking; productive thinking; leadership; the visual arts; or the performing arts.

Primary Disability Categories: Include mentally retarded; aurally, speech, visually, emotionally or orthopedically impaired; other health impaired; learning disabled; deaf/blind; multiple; autistic; traumatic brain injured; and developmentally delayed, ages 3-21. NYTC = Nevada Youth Training Center (located in Elko, Nevada).

Source: Nevada Department of Education, Administrative and Fiscal Services.

FY2009 Special Education Pupils By Category



Special Education Disability Categories: Under federal and state law, each pupil with a disability is entitled to receive a free appropriate public education (FAPE). Special education programs in the state serve pupils with identified disabilities in one of the thirteen categories established in NRS Chapter 388. School districts must provide the service necessary to assure FAPE for all pupils with disabilities. The graph above shows the relative percentage of special education pupils in specific categories.

**FY2009 'Other' School Pupil Enrollments
Private, Charter, and Home Schooled Enrollment Analysis**

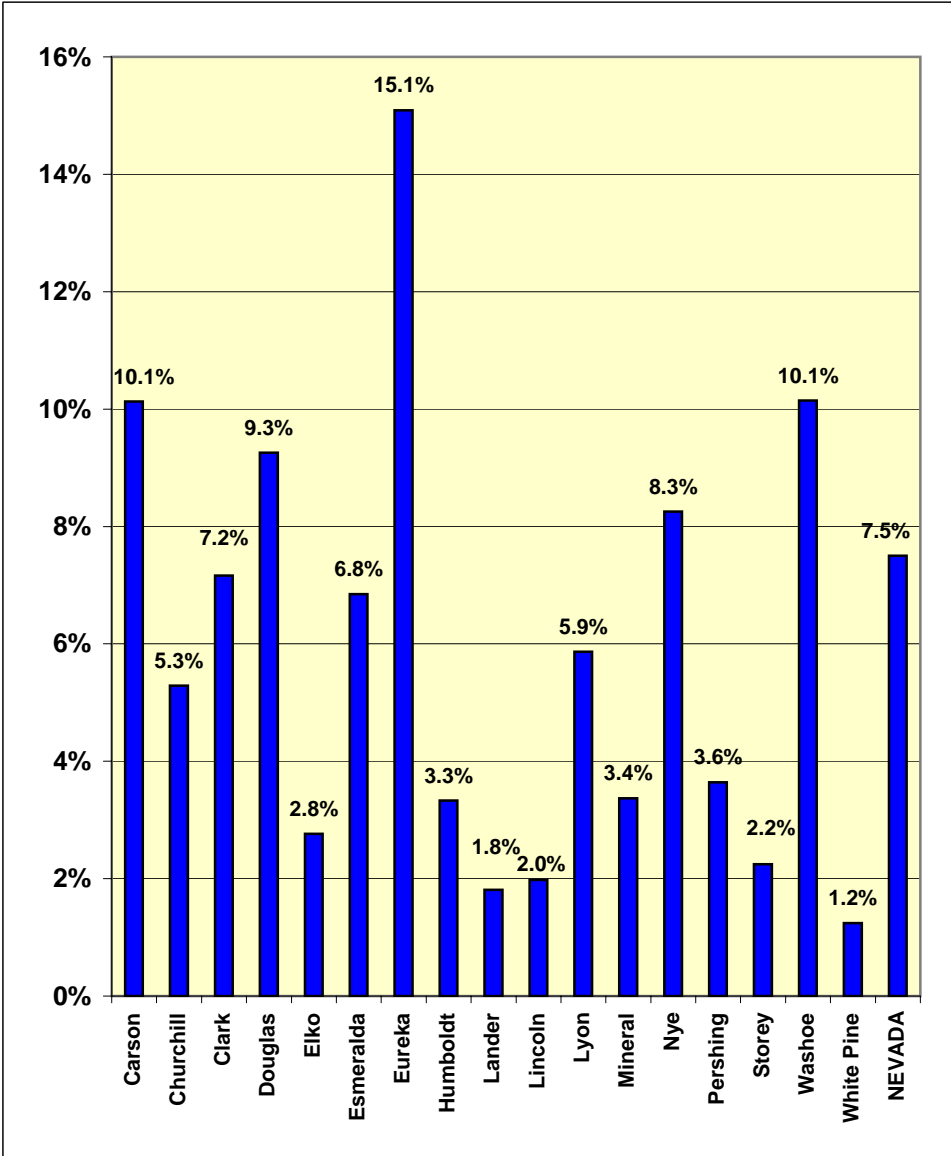
School Districts	Pupil Enrollments*				Percent School District Total** Enrollment
	Private Schools	Charter Schools	Home Schooled	Total 'Other' Schools	
Carson City	435	371	97	903	10.1%
Churchill	107	49	87	243	5.3%
Clark	15,981	6,146	1,882	24,009	7.2%
Douglas	262	199	207	668	9.3%
Elko	27	67	181	275	2.8%
Esmeralda	-	1	4	5	6.8%
Eureka	-	6	37	43	15.1%
Humboldt	-	39	76	115	3.3%
Lander	-	5	17	22	1.8%
Lincoln	-	-	20	20	2.0%
Lyon	160	192	205	557	5.9%
Mineral	-	5	15	20	3.4%
Nye	335	101	135	571	8.3%
Pershing	-	8	19	27	3.6%
Storey	-	3	7	10	2.2%
Washoe	3,740	2,602	805	7,147	10.1%
White Pine	-	5	13	18	1.2%
State Totals	21,047	9,799	3,807	34,653	7.5%

* **Pupil Enrollments** are based on the full enrollment definition which consists of all grades including pre-kindergarten (pre-K), kindergarten (K), and grades 1 through 12, inclusive (K-12), as well as ungraded students. Charter school enrollments are based on school district of residence.

** **Percent Total Enrollment:** Ratio of total other enrollment to sum of total public (school districts and charter schools), private, and home schooled enrollments.

Source: Nevada Department of Education, Administrative and Fiscal Services.

FY2009 'Other' School Enrollment Shares



Pupil Enrollment Growth in Public Schools by State

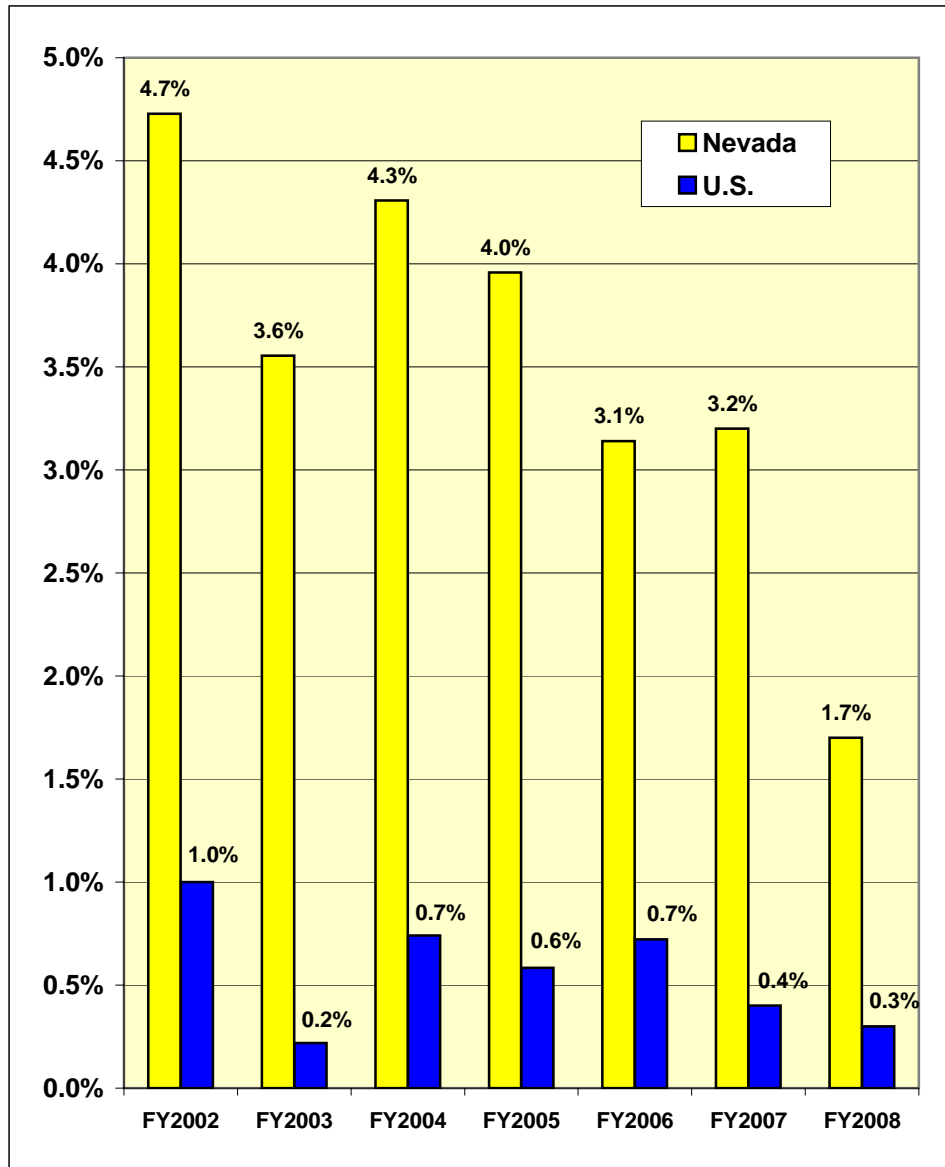
FY2008 – Ranked by Year-Over-Year Growth Rates

State	FY2008 Growth	Rank	State	FY2008 Growth	Rank
Arizona	2.5%	1	Washington	0.3%	27
Delaware	2.1%	2	Mississippi	0.2%	28
Ohio	2.1%	3	Utah	0.2%	29
Tennessee	2.0%	4	West Virginia	0.2%	30
South Dakota	1.8%	5	Alabama	-0.1%	31
Nevada	1.7%	6	California	-0.1%	32
Idaho	1.7%	7	Florida	-0.1%	33
Texas	1.6%	8	Wisconsin	-0.2%	34
Georgia	1.3%	9	Alaska	-0.3%	35
Kansas	1.2%	10	New Mexico	-0.3%	36
Nebraska	1.2%	11	New Hampshire	-0.4%	37
North Carolina	1.2%	12	Hawaii	-0.5%	38
Colorado	1.1%	13	Minnesota	-0.6%	39
New Jersey	1.1%	14	New York	-0.6%	40
Virginia	1.1%	15	Connecticut	-0.7%	41
Wyoming	1.1%	16	Illinois	-0.7%	42
Indiana	1.0%	17	Maryland	-0.7%	43
Louisiana	0.8%	18	Massachusetts	-0.7%	44
Rhode Island	0.7%	19	Montana	-1.1%	45
Oregon	0.6%	20	Pennsylvania	-1.1%	46
South Carolina	0.5%	21	Maine	-1.2%	47
Iowa	0.4%	22	North Dakota	-1.6%	48
Oklahoma	0.4%	23	Vermont.....	-2.0%	49
Arkansas	0.3%	24	Michigan	-2.6%	50
Kentucky	0.3%	25	District of Columbia ...	-3.6%	51
Missouri	0.3%	26	U.S. Average.....	0.3%	

FY2008 covers the school year of July 1, 2007 through June 30, 2008. Growth is year-over-year.

Source: National Education Association (NEA), "Rankings & Updates, Fall 2008 Update".

Nevada-U.S. Pupil Enrollment Growth Rates



Pupil-Teacher Ratios in Public Schools

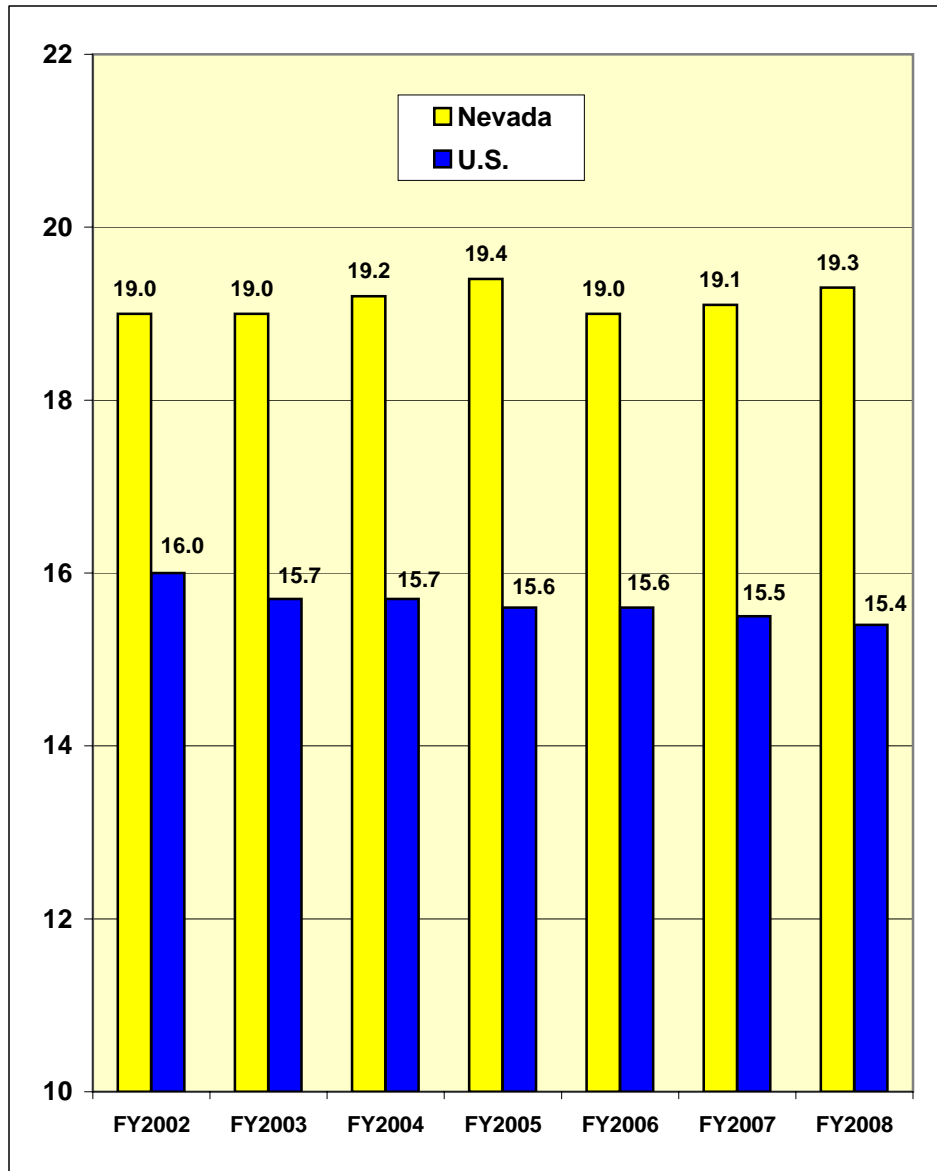
FY2008 – Ranked by Pupil-Teacher Ratios

State	FY2008 Ratio	Rank	State	FY2008 Ratio	Rank
Utah	21.6	1	Texas	14.5	27
Arizona	21.4	2	South Carolina	14.3	28
California	20.9	3	South Dakota	14.3	29
Nevada	19.3	4	West Virginia	14.2	30
Oregon	19.1	5	Georgia	14.1	31
Washington	19.0	6	Louisiana	14.1	32
Idaho	18.1	7	Maryland	14.1	33
Michigan	17.5	8	Kansas	13.8	34
Colorado	16.9	9	Iowa	13.6	35
Indiana	16.8	10	Massachusetts	13.5	36
Alaska	16.6	11	Missouri	13.5	37
Ohio	15.8	12	Montana	13.5	38
Hawaii	15.6	13	Nebraska	13.4	39
Illinois	15.6	14	Arkansas	13.2	40
Kentucky	15.6	15	Connecticut	13.2	41
Minnesota	15.6	16	New York	13.1	42
Alabama	15.4	17	New Hampshire	12.8	43
Florida	15.4	18	Wyoming	12.4	44
Delaware	15.2	19	New Jersey	12.3	45
Oklahoma	15.2	20	North Dakota	12.3	46
New Mexico	15.1	21	Virginia	11.8	47
Mississippi	14.8	22	Maine	11.7	48
Wisconsin	14.8	23	Rhode Island	10.6	49
Pennsylvania	14.6	24	District of Columbia ...	10.0	50
North Carolina	14.5	25	Vermont.....	10.0	51
Tennessee	14.5	26	U.S. Average.....	15.4	

FY2008 covers the school year of July 1, 2007 through June 30, 2008.

Source: National Education Association (NEA), "Rankings & Updates, Fall 2008 Update".

Nevada and U.S. Pupil-Teacher Ratios



Current Expenditures per Pupil

FY2008 – Ranked by Current Expenditures per Pupil

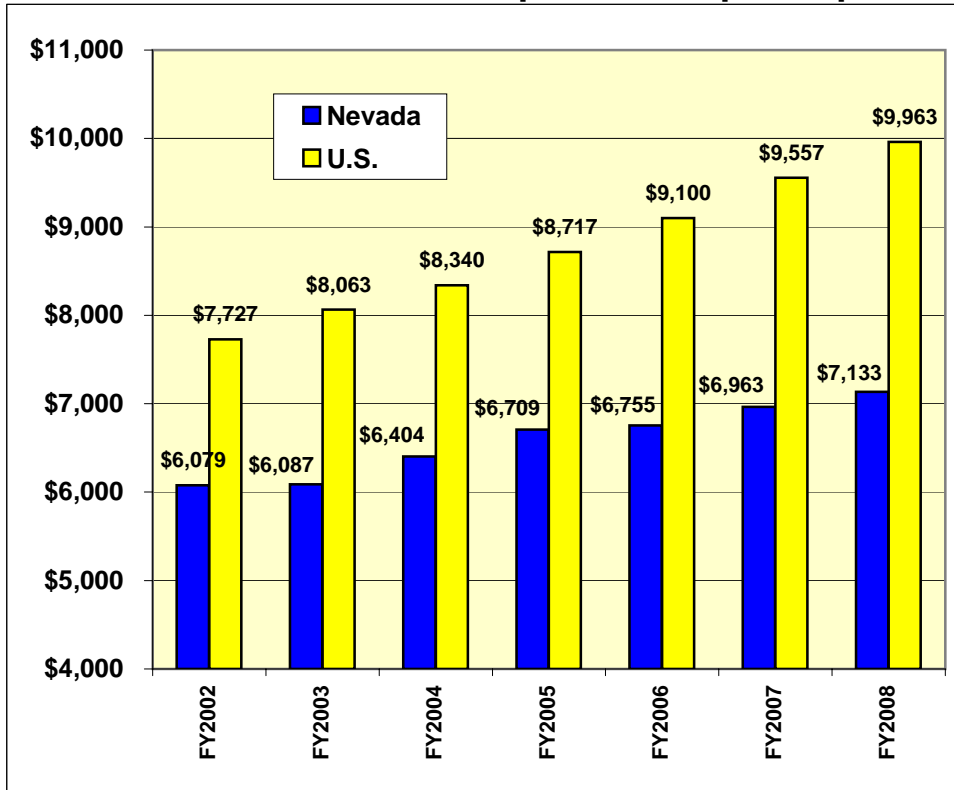
State	FY2008 Level	Rank	State	FY2008 Level	Rank
District of Columbia ...	\$17,449	1	Oregon	\$9,469	27
New Jersey	15,374	2	Indiana	9,432	28
New York	15,286	3	Colorado	9,335	29
Vermont.....	14,336	4	Louisiana	9,310	30
Wyoming	13,967	5	Washington	9,304	31
Massachusetts	13,768	6	Kentucky	9,264	32
Connecticut	13,533	7	Montana	9,029	33
Delaware	12,977	8	Alabama	8,875	34
Maine	12,802	9	Ohio	8,829	35
Maryland	11,962	10	Florida	8,816	36
Rhode Island	11,905	11	Nebraska	8,752	37
Pennsylvania	11,659	12	South Carolina ...	8,721	38
New Hampshire	11,447	13	North Dakota	8,638	39
Hawaii	11,117	14	North Carolina ...	8,615	40
Michigan	11,082	15	Missouri	8,466	41
Illinois	10,993	16	Iowa	8,432	42
Virginia	10,707	17	South Dakota	8,250	43
Wisconsin	10,643	18	Tennessee	8,022	44
Alaska	10,590	19	Texas	7,978	45
Minnesota	10,560	20	Oklahoma	7,615	46
West Virginia	10,411	21	Idaho	7,305	47
Arkansas	9,591	22	Mississippi	7,175	48
Georgia	9,564	23	Nevada	7,133	49
New Mexico	9,558	24	Utah	5,734	50
Kansas	9,544	25	Arizona	5,346	51
California	9,539	26	U.S. Average.....	\$9,963	

FY2008 covers the school year of July 1, 2007 through June 30, 2008.

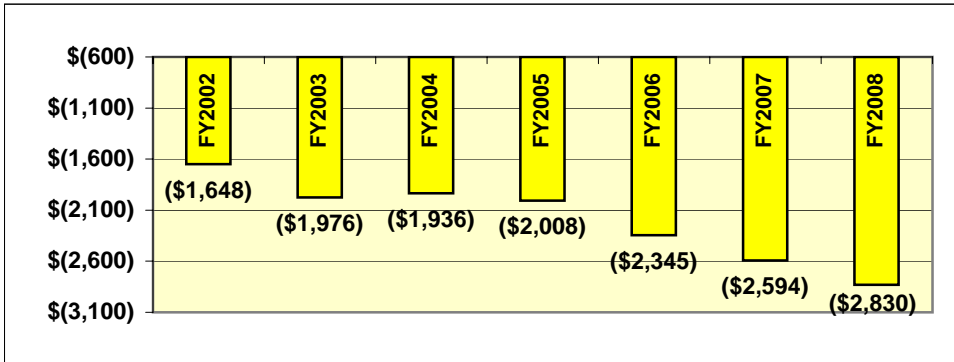
Note: Current expenditures include all state, local, and federal government expenditures for current operating expenses; excludes capital costs and expenses related to interest and debt service.

Source: National Education Association (NEA), "Rankings & Updates, Fall 2008 Update".

Nevada-U.S. Current Expenditures per Pupil



Nevada-U.S. Average Expenditure per Pupil "Deficit"



Capital Expenditures per Pupil

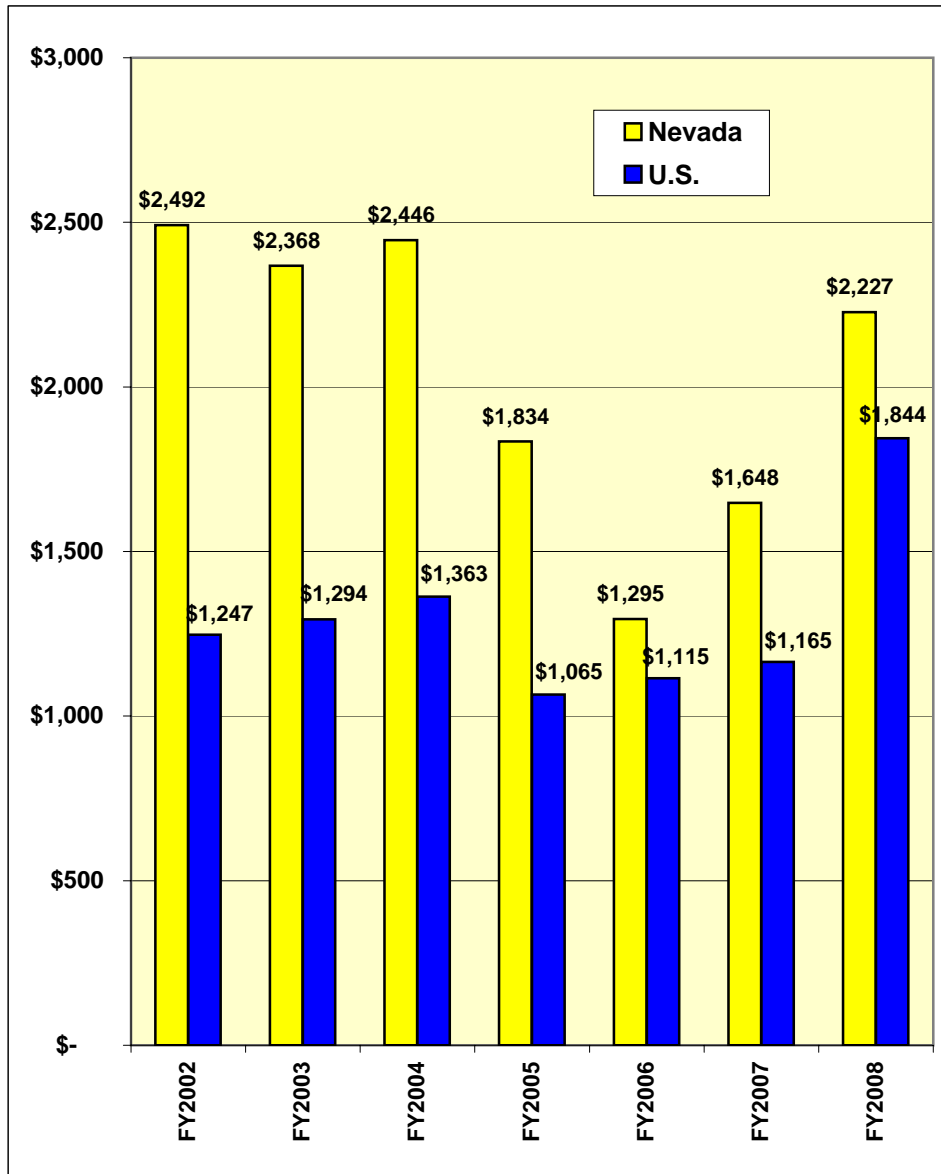
FY2008 – Ranked by Capital Expenditures per Pupil

State	FY2008 Level	Rank	State	FY2008 Level	Rank
District of Columbia ..	\$4,621	1	Georgia	\$1,420	27
Washington	4,157	2	Missouri	1,343	28
Florida	3,425	3	Iowa	1,333	29
Delaware	3,220	4	Hawaii	1,254	30
Minnesota	2,816	5	North Carolina	1,240	31
California	2,682	6	Maine	1,180	32
Virginia	2,560	7	Arizona	1,148	33
South Carolina	2,522	8	Nebraska	1,098	34
Nevada	2,227	9	New Hampshire	1,092	35
Alabama	2,189	10	Arkansas	1,035	36
Pennsylvania	2,172	11	Oregon	928	37
Texas	2,110	12	Michigan	895	38
Kansas	2,082	13	South Dakota	881	39
North Dakota	1,923	14	Idaho	859	40
Colorado	1,906	15	Oklahoma	854	41
New York	1,860	16	Kentucky	849	42
Indiana	1,848	17	Illinois	840	43
West Virginia	1,820	18	Mississippi	815	44
Maryland	1,654	19	Alaska	799	45
Wisconsin	1,651	20	Massachusetts	793	46
Vermont.....	1,599	21	Tennessee	565	47
Connecticut	1,597	22	Rhode Island	545	48
Ohio	1,505	23	New Jersey	517	49
Louisiana	1,488	24	Wyoming	493	50
New Mexico	1,471	25	Montana	356	51
Utah	1,470	26	U.S. Average.....	\$1,844	

Capital expenditures include long-term construction costs and interest on school debt.

Source: National Education Association (NEA), "Rankings & Updates, Fall 2008 Update".

Nevada-U.S. Capital Expenditures per Pupil



Total Expenditures per Pupil

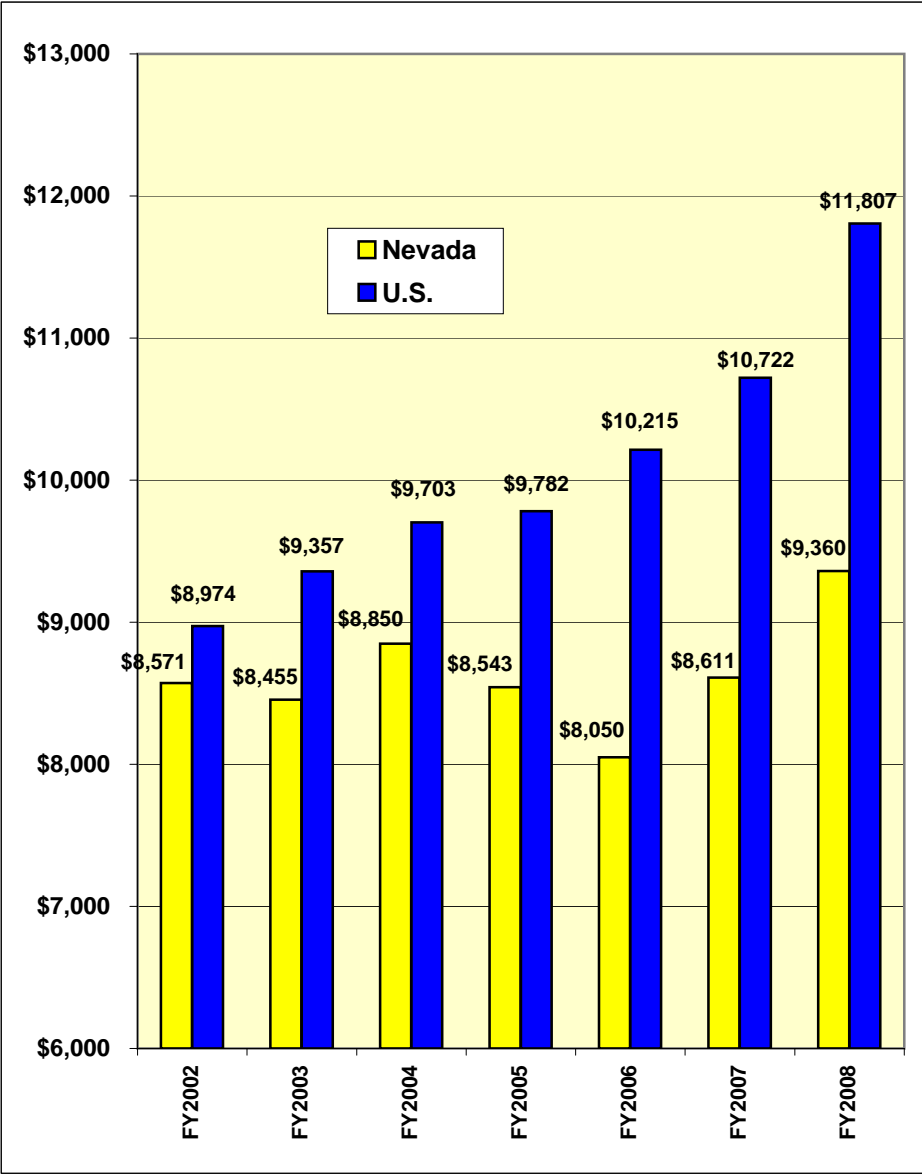
FY2008 – Ranked by Total Expenditures per Pupil

State	FY2008 Level	Rank	State	FY2008 Level	Rank
District of Columbia ..	\$22,070	1	South Carolina	\$11,243	27
New York	17,146	2	Colorado	11,241	28
Delaware	16,197	3	Alabama	11,064	29
Vermont.....	15,935	4	New Mexico	11,029	30
New Jersey	15,891	5	Georgia	10,984	31
Connecticut	15,130	6	Louisiana	10,798	32
Massachusetts	14,561	7	Arkansas	10,626	33
Wyoming	14,460	8	North Dakota	10,561	34
Maine	13,982	9	Oregon	10,397	35
Pennsylvania	13,831	10	Ohio	10,334	36
Maryland	13,616	11	Kentucky	10,113	37
Washington	13,461	12	Texas	10,088	38
Minnesota	13,376	13	North Carolina	9,855	39
Virginia	13,267	14	Nebraska	9,850	40
New Hampshire	12,539	15	Missouri	9,809	41
Rhode Island	12,450	16	Iowa	9,765	42
Hawaii	12,371	17	Montana	9,385	43
Wisconsin	12,294	18	Nevada	9,360	44
Florida	12,241	19	South Dakota	9,131	45
West Virginia	12,231	20	Tennessee	8,587	46
California	12,221	21	Oklahoma	8,469	47
Michigan	11,977	22	Idaho	8,164	48
Illinois	11,833	23	Mississippi	7,990	49
Kansas	11,626	24	Utah	7,204	50
Alaska	11,389	25	Arizona	6,494	51
Indiana	11,280	26	U.S. Average.....	\$11,807	

Total expenditures include both current and capital expenditures as defined previously.

Source: National Education Association (NEA), "Rankings & Updates, Fall 2008 Update".

Nevada-U.S. Total Expenditures per Pupil



NOTES

The "Nevada Education QuickSTATS" is available free of charge to individuals for single copy orders. Please contact NDE's Administrative and Fiscal Services office for ordering information and to obtain cost estimates related to multiple-copy orders.

Interested persons may also wish to inquire about receiving the companion product, the "Nevada Education QuickFACTS".

**NEVADA DEPARTMENT of EDUCATION
Administrative and Fiscal Services**

Phone: 775.687.9102

FAX: 775.687.9101

Internet Web Page: <http://www.doe.nv.gov>

Nevada Report Card: <http://www.nevadareportcard.com>