

Nevada Education QuickSTATS

A Pocket Guide to Statistical and Graphical Information
About Nevada's Public Education System



NEVADA DEPARTMENT of EDUCATION

Carson City Office
700 East Fifth Street
Carson City, Nevada 89701
Phone: 775.687.9200
FAX: 775.687.9101

Las Vegas Office
1820 East Sahara Avenue, Suite 205
Las Vegas, Nevada 89104-3745
Phone: 702.486.6455
FAX: 702.486.6450

FEBRUARY 2007

Much of the Nevada data and analysis presented in this publication is available in considerably greater coverage and detail on the Nevada Department of Education website:

[“http://www.doe.nv.gov”](http://www.doe.nv.gov)

Special analysis and comparisons among and between school districts is available at the Nevada Annual Report of Accountability (“Nevada Report Card”)

[“http://www.nevadareportcard.com”](http://www.nevadareportcard.com)

NEVADA EDUCATION QUICKSTATS
Table of Contents

Nevada State Board of Education	1
Department Organizational Structure	2
Nevada School Districts and Superintendents	3-4
Common Abbreviations and Acronyms	5
The “Nevada Plan”	6
<u>Nevada Comparative Statistics:</u>	
Enrollments – School Districts and Charter Schools	7-8
Full Enrollments by School District and Grade	9-10
Full Enrollments by School District and Ethnicity	11-12
Teachers, Salaries, and Student-Teacher Ratios	13-14
Number of Schools and Average Students per School	15-16
Iowa Tests of Basic Skills (ITBS) – 4th Grade	17-18
Iowa Tests of Basic Skills (ITBS) – 7th Grade	19-20
Iowa Tests of Educational Development (ITED) –10th	21-22
Graduation and Dropout Rates	23-24
Special Education Enrollments and Teacher Units	25-26
Private, Charter, and Home Schooled Enrollments	27-28
<u>National Comparative Statistics:</u>	
Enrollment Growth by State	29-30
Student-Teacher Ratios by State	31-32
Current Expenditures per Student by State	33-34
Capital Expenditures per Student by State	35-36
Total Expenditures per Student by State	37-38

Nevada Department of Education
Internet Web Page: <http://www.doe.nv.gov>

**NEVADA STATE BOARD of EDUCATION
NEVADA STATE BOARD
for
OCCUPATIONAL EDUCATION**

Members

Dr. Cliff Ferry [10], President
Marcia Washington [3], Vice President
Barbara Myers [9], Clerk Jan Biggerstaff [6]
Sharon Frederick [1] Dr. John Gwaltney [8]
Dr. Merv Iverson [7] Greg Nance [5]
Cindy Reid [4] Anthony Ruggiero [2]
Madisen McGrath (Student Representative)

[] = District represented

Dr. Keith Rheault
Superintendent of Public Instruction

District Representation

The State Board of Education is comprised of ten members and a non-voting student representative: seven of the ten members are elected from Clark, Lincoln, and Nye counties (Districts 1 through 7); one member is elected from Washoe County (District 8); and two members are elected from the remaining thirteen counties of the state (Districts 9 and 10). Members are elected on a non-partisan ballot for four-year terms and are limited to three consecutive terms.

NEVADA DEPARTMENT of EDUCATION
Organizational Structure

Keith Rheault
Superintendent of Public Instruction

Gloria Dopf, Deputy Superintendent
Instructional, Research and Evaluative Services

- Assessments, Program Accountability and Curriculum
Assessment
Program Accountability
Curriculum Development
- Career, Technical, and Adult Education
- Special Education, ESEA and School Improvement
Special Education
Elementary and Secondary Education Act (ESEA)
School Improvement
- Teacher Licensure
- Technology and Innovative Programs

James Wells, Deputy Superintendent
Administrative and Fiscal Services

- Child Nutrition and School Health
- Fiscal Accountability
- Fiscal Services
- Department Operations

NEVADA SCHOOL DISTRICTS and SUPERINTENDENTS

Carson City School District, Dr. Mary Pierczynski

P.O. Box 603, Carson City, NV 89702
Phone 775.283.2100 / FAX 775.283.2090

Churchill County School District, Dr. Carolyn Ross

545 East Richards Street, Fallon, NV 89406
Phone 775.423.5184 / FAX 775.423.2959

Clark County School District, Dr. Walt Rulffes

5100 West Sahara Avenue, Las Vegas, NV 89121
Phone 702.799.5310 / FAX 702.799.5505

Douglas County School District, Mrs. Carol Lark

P.O. Box 1888, Minden, NV 89423
Phone 775.782.5134 / FAX 775.782.3162

Elko County School District, Mrs. Antoinette Cavanaugh

P.O. Box 1012, Elko, NV 89803
Phone 775.738.5196 / FAX 775.738.5857

Esmeralda County School District, Mr. Robert Aumaugher

P.O. Box 560, Goldfield, NV 89013
Phone 775.485.6382 / FAX 775.485.3511

Eureka County School District, Mr. Ben Zunino

P.O. Box 249, Eureka, NV 89316
Phone 775.237.5373 / FAX 775.237.5014

Humboldt County School District, Dr. Delbert Jarman

310 East Fourth Street, Winnemucca, NV 89445
Phone 775.623.8100 / FAX 775.623.8102

Lander County School District, Mr. Curtis Jordan

P.O. Box 1300, Battle Mountain, NV 89820
Phone 775.635-2886 / FAX 775.635.5347

NEVADA SCHOOL DISTRICTS and SUPERINTENDENTS
(Continued)

Lincoln County School District, Mr. Rick Hardy

P.O. Box 118, Panaca, NV 89042
Phone 775.728.4471 / FAX 775.728.4435

Lyon County School District, Mr. Nat Lommori

25 East Goldfield Avenue, Yerington, NV 89447
Phone 775.463.6800 / FAX 775.463.6808

Mineral County School District, Mr. Steven Cook

P.O. Box 1540, Hawthorne, NV 89415
Phone 775.945.2403 / FAX 775.945.3709

Nye County School District, Dr. William (“Rob”) Roberts

P.O. Box 113, Tonopah, NV 89049
Phone 775.482.6258 / FAX 775.482.8573

Pershing County School District, Mr. Daniel Fox

P.O. Box 389, Lovelock, NV 89419
Phone 775.273.7819 / FAX 775.273.2668

Storey County School District, Dr. Robert (“Rob”) Slaby

P.O. Box C, Virginia City, NV 89440
Phone 775.847.0983 / FAX 775.847.0989

Washoe County School District, Mr. Paul Dugan

P.O. Box 30425, Reno, NV 89520-3425
Phone 775.348.0200 / FAX 775.348.0304

White Pine County School District, Mr. Robert Dolezal

1135 Avenue C, Ely, NV 89301-2331
Phone 775.289.4851 / FAX 775.289.3999

COMMON ABBREVIATIONS and ACRONYMS

ACT	American College Test
AFT	American Federation of Teachers
AYP	Adequate Yearly Progress (NCLB)
CSR	Class Size Reduction
CRT	Criterion-Referenced Test
DSA	Distributive School Account
ELL	English Language Learners
ESEA	Elementary and Secondary Education Act
ETS	Educational Testing Service
FAPE	Free Appropriate Public Education
FRL	Free and Reduced-Price Lunch (program)
GTE	Gifted and Talented Education
HSPE	High School Proficiency Examination
IDEA	Individuals with Disabilities Education Act
IEP	Individualized Education Program
ITBS	Iowa Tests of Basic Skills
ITED	Iowa Tests of Educational Development
LEA	Local Education Agency (e.g., a Nevada school district)
LEP	Limited English Proficient
NASB	Nevada Association of School Boards
NASS	Nevada Association of School Superintendents
NCES	National Center for Education Statistics
NCLB	No Child Left Behind (Act)
NDE	Nevada Department of Education
NEA	National Education Association
NPEP	Nevada Proficiency Examination Program
NRT	Norm-Referenced Test
NSEA	Nevada State Education Association
SASI	School Administration Student Information
SAT	Scholastic Aptitude Test
SEA	State Education Association (e.g., NDE)

THE “NEVADA PLAN”

Nevada Revised Statutes (NRS) 387.121 Guaranteed per Student Level of Financial Support Summary (Emphasized) and Full Statute

“The legislature declares ... objective of state financial aid ... **ensure each Nevada child** [receives] a **reasonably equal educational opportunity** ... **Recognizing** wide **local variation in wealth and costs per pupil** ... state should **supplement local financial ability** ... in each school district to provide programs of instruction ... that offer full opportunity ... to receive the benefit of the purposes for which public schools are maintained ... **state’s financial obligation** ... **expressed in formula** partially on a **per pupil basis** and partially on a **per program basis** ...”

NRS 387.121 Legislative Declaration; Nevada Plan. The legislature declares that the proper objective of state financial aid to public education is to ensure each Nevada child a reasonably equal educational opportunity. Recognizing wide local variations in wealth and costs per pupil, this state should supplement local financial ability to whatever extent necessary in each school district to provide programs of instruction in both compulsory and elective subjects that offer full opportunity for every Nevada child to receive the benefit of the purposes for which public schools are maintained. Therefore, the quintessence of the state’s financial obligation for such programs can be expressed in a formula partially on a per pupil basis and partially on a per program basis as: State financial aid to school districts equals the difference between school district basic support guarantee and local available funds produced by mandatory taxes minus all the local funds attributable to pupils who reside in the county but attend a charter school. This formula is designated the Nevada Plan.

SCHOOL DISTRICT and CHARTER SCHOOL ENROLLMENTS
For FY2007 (School Year 2006-2007)

School Districts and Charter Schools*	FY2007 Full Enrollment	FY2007 Weighted Enrollment	FY2007 Weighted Apportionment Enrollment
CARSON CITY SCHOOL DISTRICT	8,320	8,072.8	8,072.8
Carson Montessori School (Charter)***	103	94.6	94.6
Silver State High School (Charter)** ***	259	259.0	257.0
CHURCHILL COUNTY SCHOOL DISTRICT	4,463	4,322.6	4,322.6
CLARK COUNTY SCHOOL DISTRICT	302,763	292,725.0	292,706.4
Andre Agassi College Preparatory Academy	512	496.8	496.8
Explore Knowledge Academy (Charter)	521	511.8	511.8
Innovations International (Charter)	403	381.4	381.4
Keystone Academy (Charter)	55	55.0	49.0
Nevada State High School (Charter)**	148	148.0	148.0
Odyssey Charter Schools	1,409	1,390.6	1,390.6
100 Academy of Excellence (Charter)	468	416.8	416.8
DOUGLAS COUNTY	6,848	6,657.6	6,609.0
Sierra Crest Academy (Charter)***	60	60.0	60.0
ELKO COUNTY SCHOOL DISTRICT	9,907	9,587.0	9,532.2
ESMERALDA COUNTY SCHOOL DISTRICT	68	65.6	64.6
EUREKA COUNTY SCHOOL DISTRICT	235	228.6	228.6
HUMBOLDT COUNTY SCHOOL DISTRICT	3,399	3,279.0	3,267.0
LANDER COUNTY SCHOOL DISTRICT	1,258	1,209.6	1,209.6
LINCOLN COUNTY SCHOOL DISTRICT	982	951.2	951.2
LYON COUNTY SCHOOL DISTRICT	9,175	8,866.2	8,866.2
MINERAL COUNTY SCHOOL DISTRICT	667	639.8	639.8
NYE COUNTY SCHOOL DISTRICT	6,536	6,313.6	6,307.6
PERSHING COUNTY SCHOOL DISTRICT	797	769.4	769.4
STOREY COUNTY SCHOOL DISTRICT	454	444.4	444.4

Special Note: These student enrollment figures are for Distributive School Account (DSA) payment purposes and may reflect adjustments made subsequent to the fall "certified count day" enrollments and therefore are slightly different (by 36 students) from the count day full enrollment figures presented in subsequent tables.

SCHOOL DISTRICT and CHARTER SCHOOL ENROLLMENTS
For FY2007 (School Year 2006-2007)
(Continued)

School Districts and Charter Schools*	FY2007 Full Enrollment	FY2007 Weighted Enrollment	FY2007 Weighted Apportionment Enrollment
WASHOE COUNTY SCHOOL DISTRICT	63,046	61,035.2	61,033.2
Academy for Career Education (Charter)***	188	188.0	188.0
Bailey Charter Elementary School	271	253.4	253.4
Coral Academy of Science (Charter)***	420	420.0	420.0
High Desert Montessori School (Charter)***	215	202.6	202.6
I Can Do Anything Charter High School	352	352.0	352.0
Mariposa Academy of Language and Learning	176	160.0	160.0
Rainshadow Community Charter High School	101	101.0	101.0
Sierra Nevada Academy (Charter)	244	233.6	233.6
TEAM A (Charter)** ***	157	157.0	157.0
WHITE PINE COUNTY SCHOOL DISTRICT	1,420	1,383.6	1,399.2
NEVADA TOTALS	426,400	412,432.8	412,297.4

* School district enrollments exclude charter school enrollments, which are listed separately. Charter schools are listed with their sponsoring school district or, in the case of State Board of Education sponsored charter schools, with the school district of their head office, irrespective of the county of residence of their students.

** Denotes a State Board of Education sponsored charter school.

*** Denotes a multi-district charter school, i.e., a charter school with students residing in more than one school district; includes the charter school's total enrollment irrespective of county (school district) of residence.

Full Enrollment: Total student count in public schools in all grades, including pre-kindergarten (pre-K), kindergarten (K), and grades 1 through 12, inclusive (K-12), as well as ungraded students. Ungraded refers to students who are enrolled in non-graded classes in a school for special education or students who cannot be assigned to a particular grade because of special circumstances.

Weighted Enrollment: Based on NRS 387.1233(1)(a), weighted enrollment is the total count of students (i.e., the full enrollment determined above), with pre-K and K students weighted at 60% of their full enrollment count. Weighted enrollment includes ungraded students, but excludes net transfers (i.e., student transfers out minus transfers in) as described in weighted apportionment enrollment, below.

Weighted Apportionment Enrollment: Represents the weighted student enrollment adjusted to include net transfers, that is, student transfers out of a school district minus student transfers in. Student transfers are only counted between other adjoining states, not between other school districts within Nevada. The weighted apportionment enrollment is used to calculate the total basic support per student, or the "Nevada Plan" guarantee funding (NRS 387.121), for a given school year.

**School District Full Enrollments by Grade
For FY2007 (School Year 2006-2007)**

School Districts	Pre-K and K	Elementary Grades 1-6	Secondary Grades 7-12	Ungraded	Total
Carson City	639	3,815	3,969	-	8,423
Churchill County	351	2,016	2,096	-	4,463
Clark County	25,395	146,527	133,832	413	306,167
Douglas County	476	2,955	3,477	-	6,908
Elko County	800	4,545	4,546	16	9,907
Esmeralda County	6	46	16	-	68
Eureka County	16	107	112	-	235
Humboldt County	300	1,540	1,559	-	3,399
Lander County	121	491	646	-	1,258
Lincoln County	77	384	520	1	982
Lyon County	772	4,206	4,191	6	9,175
Mineral County	68	296	303	-	667
Nye County	556	2,953	2,985	42	6,536
Pershing County	69	341	383	4	797
Storey County	24	193	237	-	454
Washoe County	5,168	30,418	29,368	59	65,013
White Pine County	40	683	697	-	1,420
State Board Charters	-	-	564	-	564
Nevada Totals	34,878	201,516	189,501	541	426,436

Note: School district enrollments include all charter school students attending within the district.

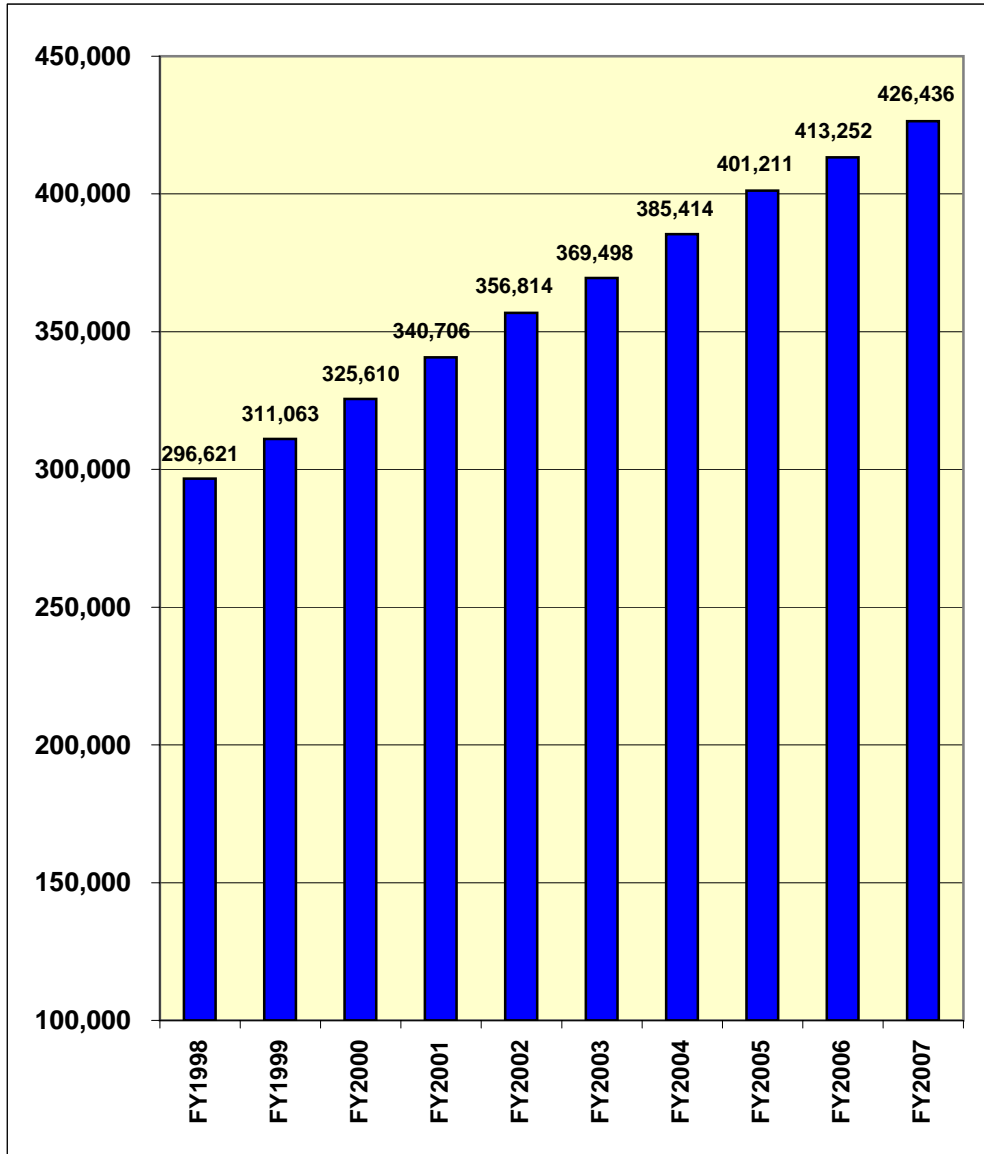
Enrollments: Pre-K (pre-Kindergarten) refers to 3- and 4-year old children receiving special education (NRS 388.490); Elementary includes grades 1-6; Secondary includes grades 7-12.

Ungraded: Students who are enrolled in non-graded classes for special education or students who cannot be assigned to a particular grade because of the nature of his or her condition (NAC 387.111).

Graph Note: Graph enrollments reflect the latest revisions and audit adjustments; differs slightly from the table above which uses unadjusted Fall 2007 (ethnic report) count day figures.

Source: Nevada Department of Education (NDE), Research Bulletin.

Nevada Full Enrollments by School Year



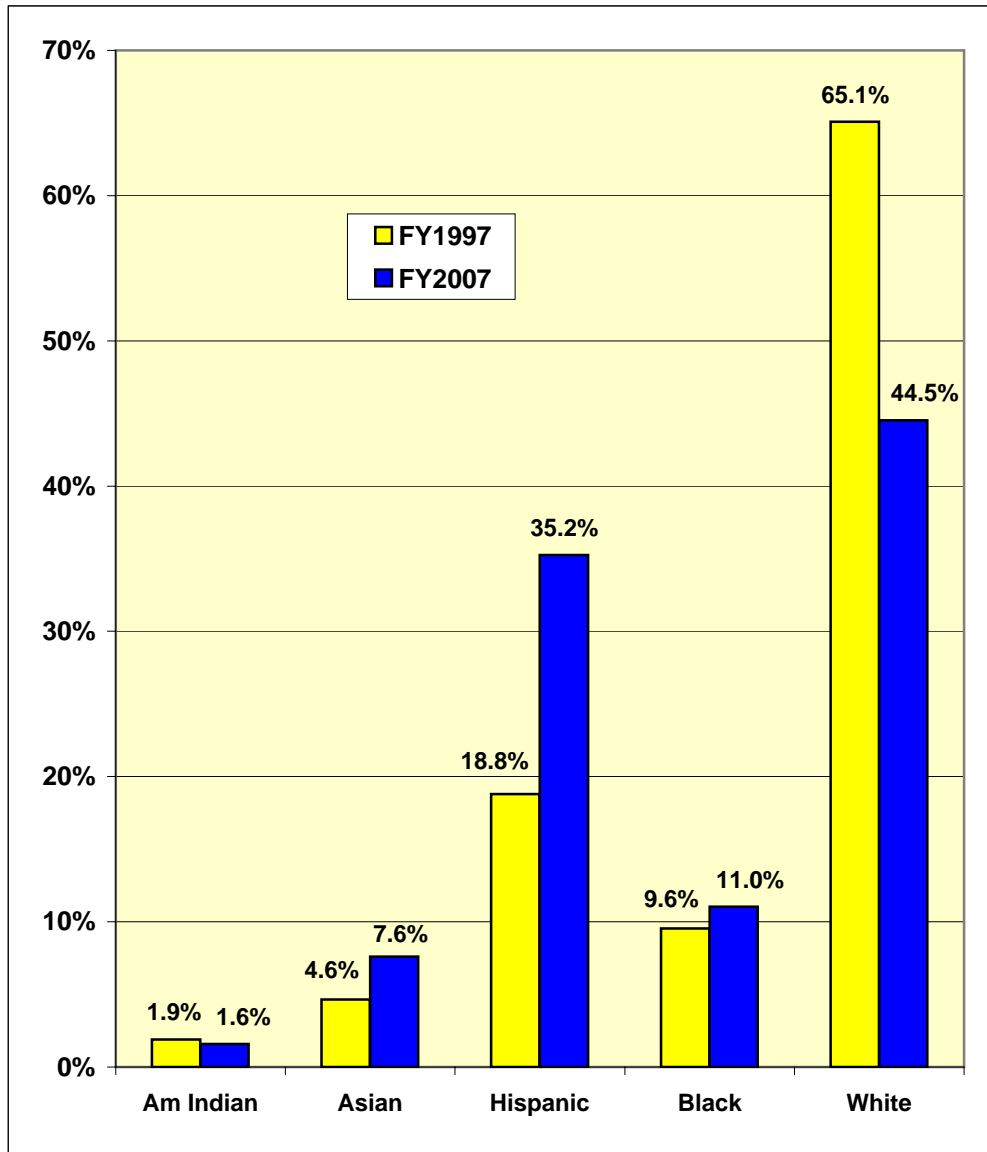
**School District Full Enrollments by Ethnicity
For FY2007 (School Year 2006-2007)**

School Districts	American Indian or Alaskan Native	Asian or Pacific Islander	Hispanic	Black	White	Total
Carson City	280	223	2,613	93	5,214	8,423
Churchill County	314	223	601	94	3,231	4,463
Clark County	2,536	27,096	118,019	43,634	114,882	306,167
Douglas County	241	182	995	76	5,414	6,908
Elko County	689	116	2,505	76	6,521	9,907
Esmeralda County	4	1	18	-	45	68
Eureka County	10	2	43	-	180	235
Humboldt County	169	31	945	13	2,241	3,399
Lander County	83	8	277	8	882	1,258
Lincoln County	14	23	73	57	815	982
Lyon County	404	168	1,730	181	6,692	9,175
Mineral County	127	7	59	53	421	667
Nye County	152	168	1,408	227	4,581	6,536
Pershing County	75	14	212	6	490	797
Storey County	8	16	25	6	399	454
Washoe County	1,590	4,089	20,509	2,486	36,339	65,013
White Pine County	88	20	163	9	1,140	1,420
State Board Charters	16	19	119	34	376	564
Nevada Totals	6,800	32,406	150,314	47,053	189,863	426,436
Percent Total	1.6%	7.6%	35.2%	11.0%	44.5%	100.0%

Note: School district enrollments include charter schools except State Board charters.

Source: Nevada Department of Education (NDE), Administrative and Fiscal Services.

Comparative Full Enrollments by Ethnicity



**School District FTE Licensed Teacher Positions
Teachers and Average Salaries for FY2007**

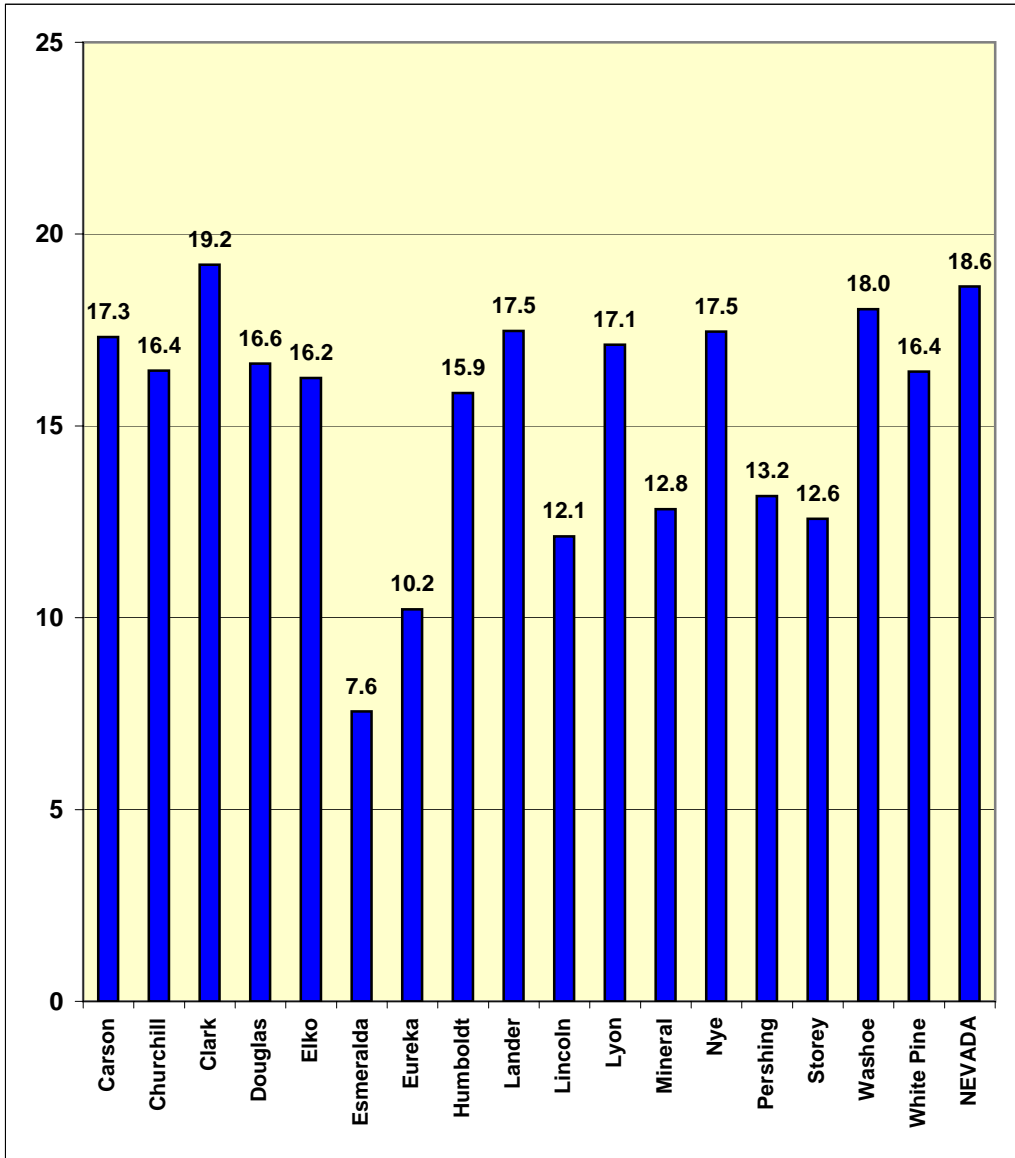
Classification	Elementary		Secondary		Total Teaching	
	FTEs	Average Salary	FTEs	Average Salary	FTEs	Average Salary
Carson City	239	\$ 46,879	164	\$ 45,799	487	\$ 46,657
Churchill County	133	54,591	84	53,041	272	53,182
Clark County	8,410	45,393	4,992	46,490	15,941	46,309
Douglas County	184	51,958	161	49,212	416	50,510
Elko County	296	47,878	202	47,856	610	47,675
Esmeralda County	8	45,357	-	-	9	45,351
Eureka County	10	67,806	9	61,754	23	63,233
Humboldt County	108	52,781	65	54,872	214	53,246
Lander County	30	56,618	25	51,547	72	53,247
Lincoln County	29	49,476	31	49,559	81	49,942
Lyon County	249	45,691	197	45,511	536	45,646
Mineral County	25	45,242	16	45,877	52	46,406
Nye County	165	48,374	139	47,570	374	48,039
Pershing County	26	55,411	20	57,827	61	55,369
Storey County	12	55,018	17	54,850	36	55,116
Washoe County	1,794	48,633	1,183	46,688	3,603	47,582
White Pine County	43	44,359	27	48,671	87	46,581
State Board Charters	-	-	9	47,598	12	50,233
Nevada Totals	11,760	\$ 46,388	7,339	\$ 46,852	22,885	\$ 46,881

Note: Full-time equivalent (FTE) teaching positions rounded to nearest whole number. Total positions include elementary and secondary teachers, as well as special education and occupational teachers.

Salaries: The average salaries exclude the 9.875% employee portion of the personnel employees retirement contribution, which is paid by the local school districts on behalf of their employees.

Source: Nevada Department of Education (NDE), Administrative and Fiscal Services.

FY2007 Student-Teacher Ratios



**School District Number of Public Schools
For FY2007 (School Year 2006-2007)**

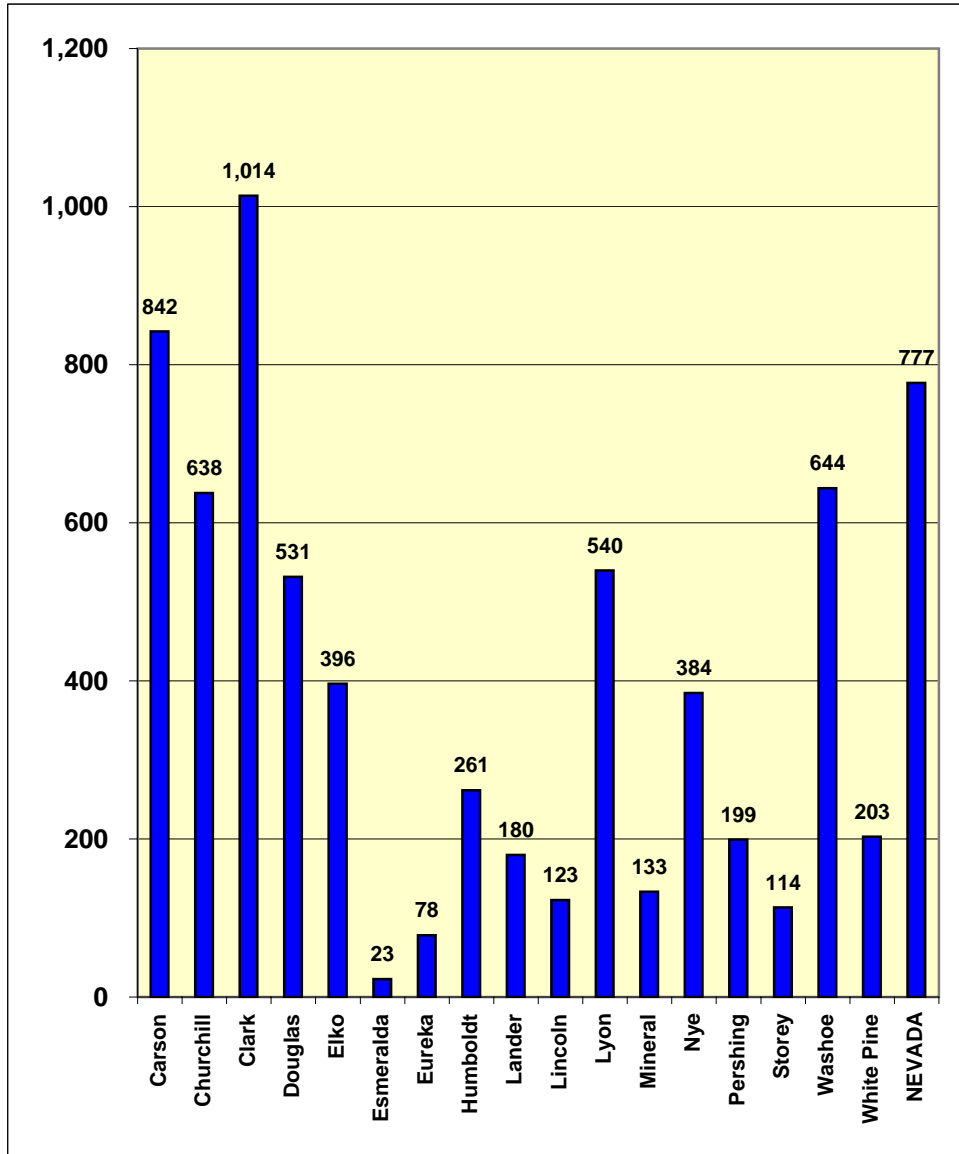
School Districts	Elementary Schools	Junior and Middle Schools	High Schools	Special and Charter Schools	Total Schools
Carson City	6	2	1	5	14
Churchill County	5	1	1	2	9
Clark County	200	56	40	30	326
Douglas County	7	3	2	4	16
Elko County	16	2	7	1	26
Esmeralda County	3	-	-	-	3
Eureka County	2	-	1	-	3
Humboldt County	9	2	2	1	14
Lander County	4	1	2	-	7
Lincoln County	4	2	2	1	9
Lyon County	8	4	5	1	18
Mineral County	3	1	1	1	6
Nye County	11	1	5	1	18
Pershing County	2	1	1	-	4
Storey County	2	1	1	-	4
Washoe County	63	16	14	11	104
White Pine County	4	1	2	2	9
State Board Charters	-	-	3	-	3
Nevada Totals	349	94	90	60	593

Note: Charter schools are included with sponsoring school district or county of head office.

Graph Note: Accompanying graph is based on the school districts' full enrollments for all grades divided by the total number of district schools, including charters but omitting special schools.

Source: Nevada Department of Education (NDE), Administrative and Fiscal Services.

FY2007 Average Students per Public School



Iowa Tests of Basic Skills (ITBS)
4th Grade Spring 2006 Test Results (Norm = 50th Percentile)

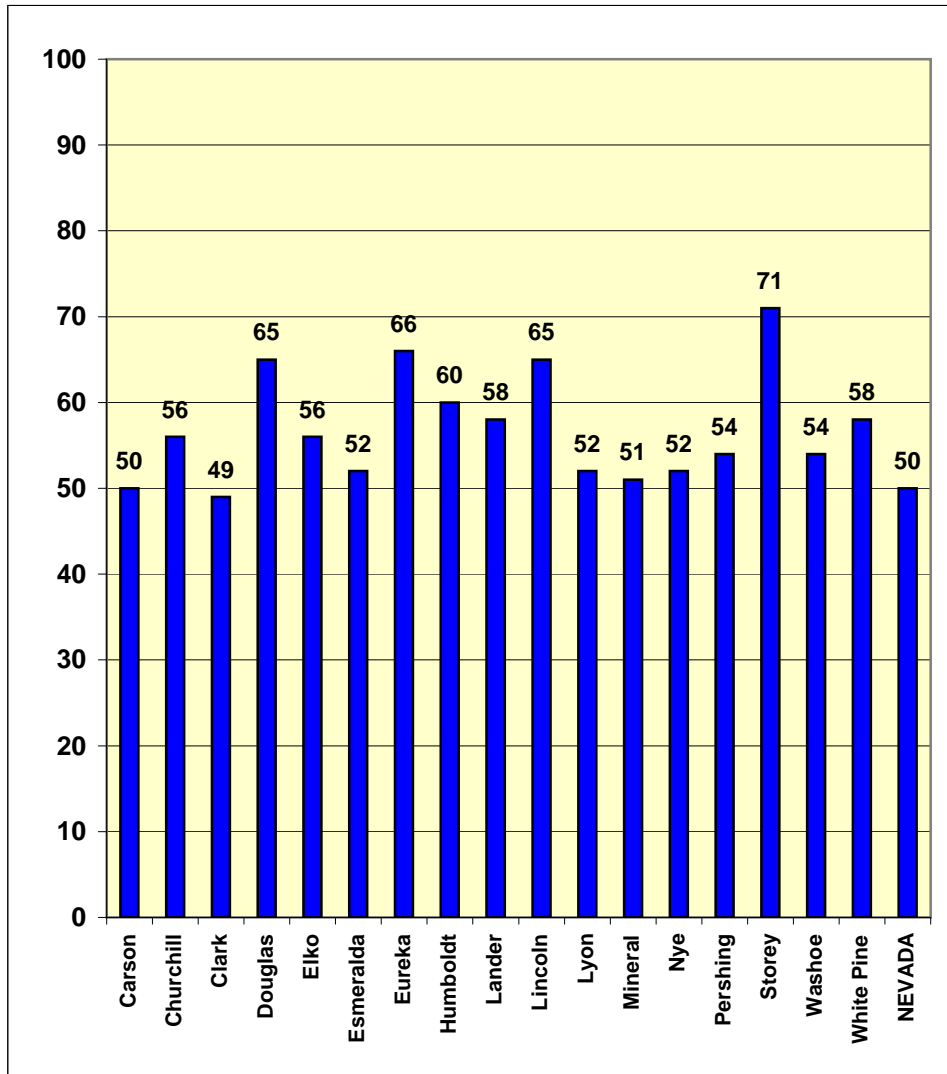
School Districts	Nevada/National Percentile Rank Comparisons			
	Reading	Language	Math	Science
Carson City	50	54	54	58
Churchill County	56	55	61	63
Clark County	49	55	55	52
Douglas County	65	70	62	69
Elko County	56	60	57	60
Esmeralda County	52	54	37	46
Eureka County	66	79	69	67
Humboldt County	60	64	58	64
Lander County	58	61	52	59
Lincoln County	65	67	71	66
Lyon County	52	54	50	56
Mineral County	51	55	42	49
Nye County	52	51	54	58
Pershing County	54	49	50	53
Storey County	71	73	65	74
Washoe County	54	55	58	60
White Pine County	58	53	54	63
Nevada Average	50	56	55	55
National Norm	50	50	50	50

The ITBS is a set of norm-referenced tests (NRT) which compare the performance of students with that of a national norming sample. The tests measure academic performance in reading, language arts, mathematics, and science. Scoring is based on a normal distribution of scores generated by the original norming sample. Thus, each year, students who take the tests are compared against students who were involved in the initial administrations that were used to set the scoring tables.

Note: Charter school test results are included within the respective school district averages.

Source: Nevada Department of Education (NDE), Office of Assessments, Program Accountability and Curriculum.

Iowa Tests of Basic Skills (ITBS)
4th Grade Spring 2006 Reading Test Results
(National Norm = 50th Percentile)



Iowa Tests of Basic Skills (ITBS)
7th Grade Spring 2006 Test Results (Norm = 50th Percentile)

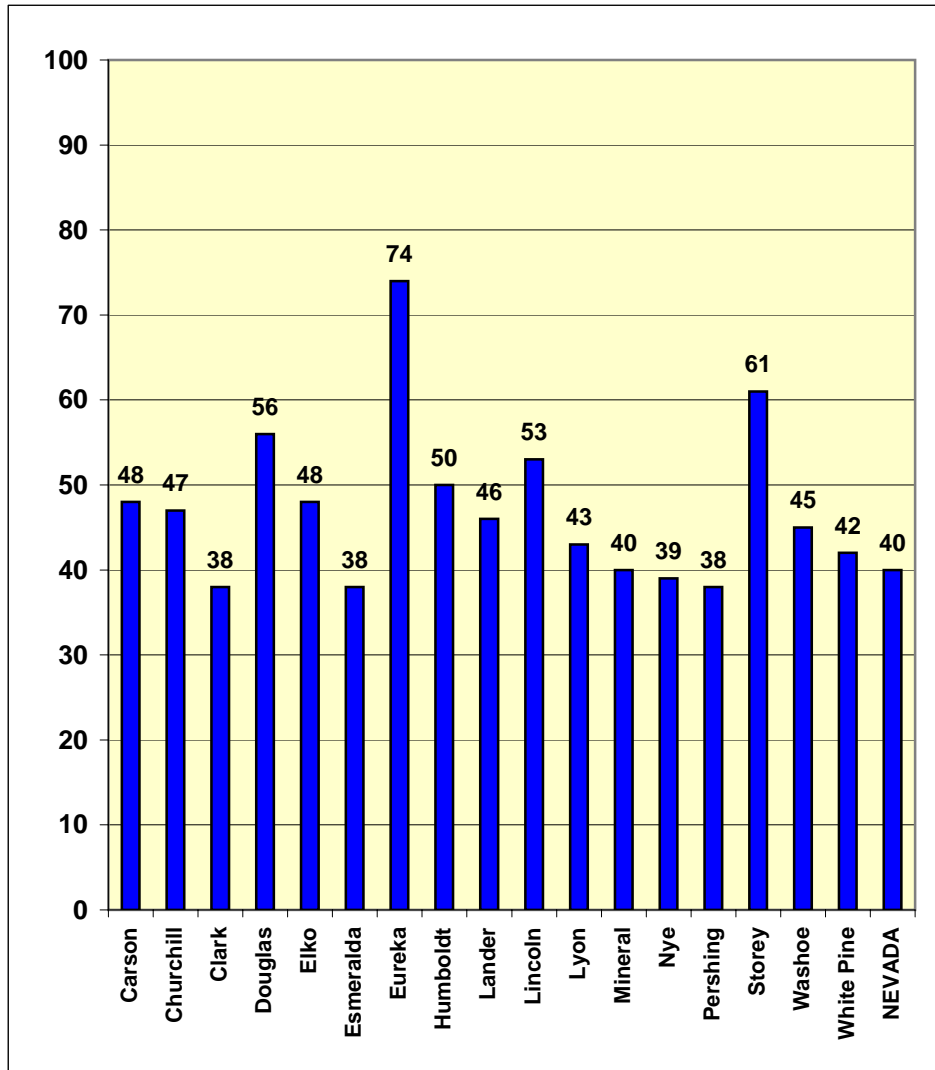
School Districts	Nevada/National Percentile Rank Comparisons			
	Reading	Language	Math	Science
Carson City	48	45	51	61
Churchill County	47	49	53	55
Clark County	38	43	44	43
Douglas County	56	55	58	61
Elko County	48	48	52	57
Esmeralda County	38	39	48	38
Eureka County	74	77	85	76
Humboldt County	50	46	51	58
Lander County	46	47	49	50
Lincoln County	53	44	60	55
Lyon County	43	44	46	53
Mineral County	40	37	47	48
Nye County	39	37	39	46
Pershing County	38	43	37	53
Storey County	61	54	58	66
Washoe County	45	46	50	55
White Pine County	42	32	44	48
Nevada Average	40	44	46	47
National Norm	50	50	50	50

The ITBS is a set of norm-referenced tests (NRT) which compare the performance of students with that of a national norming sample. The tests measure academic performance in reading, language arts, mathematics, and science. Scoring is based on a normal distribution of scores generated by the original norming sample. Thus, each year, students who take the tests are compared against students who were involved in the initial administrations that were used to set the scoring tables.

Note: Charter school test results are included within the respective school district averages.

Source: Nevada Department of Education (NDE), Office of Assessments, Program Accountability and Curriculum.

**Iowa Tests of Basic Skills (ITBS)
7th Grade Spring 2006 Reading Test Results
(National Norm = 50th Percentile)**



**Iowa Tests of Educational Development (ITED)
10th Grade Spring 2006 Test Results (Norm = 50th Percentile)**

School Districts	Nevada/National Percentile Rank Comparisons			
	Reading	Language	Math	Science
Carson City	47	40	47	44
Churchill County	52	45	49	48
Clark County	39	42	41	39
Douglas County	58	53	57	64
Elko County	47	44	41	48
Esmeralda County*	-	-	-	-
Eureka County	41	43	40	48
Humboldt County	46	42	51	52
Lander County	48	45	46	48
Lincoln County	57	52	53	64
Lyon County	48	44	44	52
Mineral County	35	30	33	30
Nye County	38	37	38	36
Pershing County	47	40	46	54
Storey County	48	38	31	35
Washoe County	48	47	48	51
White Pine County	52	45	48	48
Nevada Average	41	42	43	42
National Norm	50	50	50	50

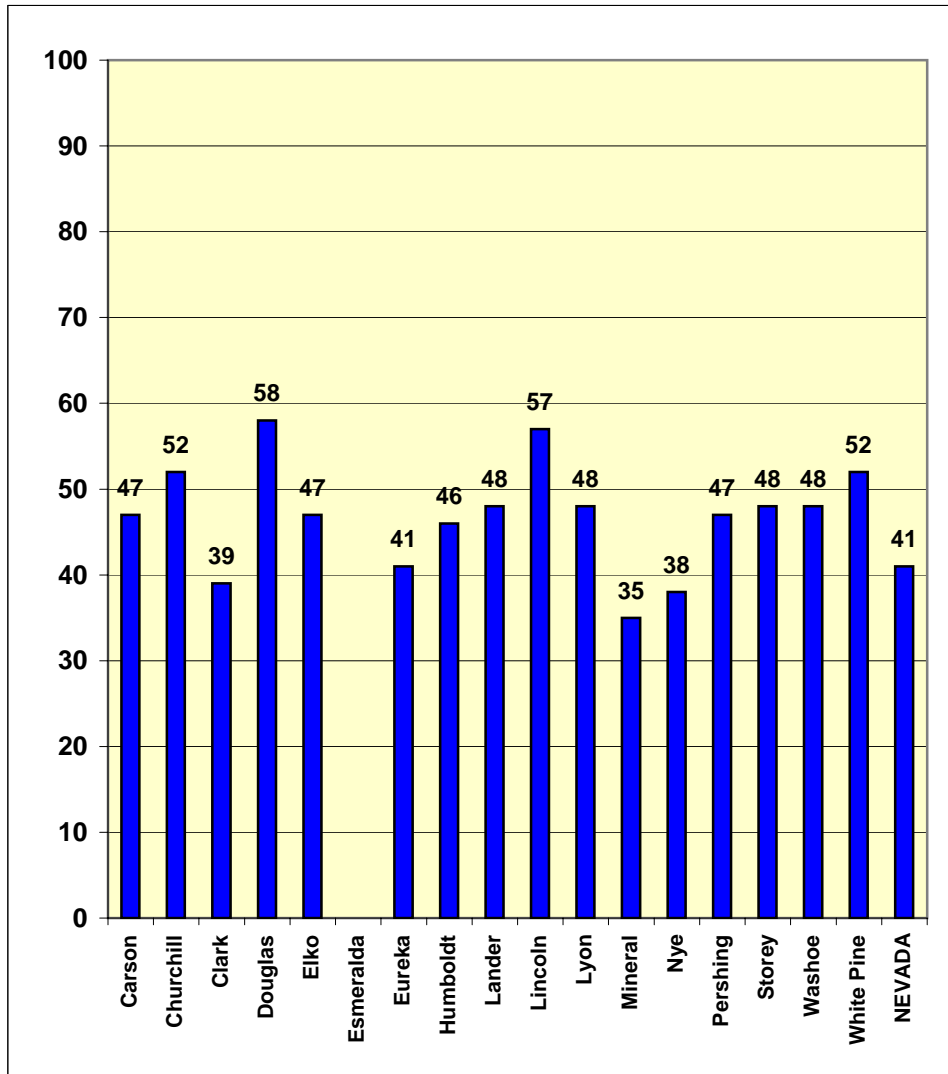
The ITED is a set of norm-referenced tests (NRT) which compare the performance of students with that of a national norming sample. The tests measure academic performance in reading, language arts, mathematics, and science. Scoring is based on a normal distribution of scores generated by the original norming sample. Thus, each year, students who take the tests are compared against students who were involved in the initial administrations that were used to set the scoring tables.

Note: Charter school test results are included within the respective school district averages.

* Esmeralda County School District has no grade 9-12 schools.

Source: Nevada Department of Education (NDE), Office of Assessments, Program Accountability and Curriculum.

Iowa Tests of Educational Development (ITED)
10th Grade Spring 2006 Reading Test Results
(National Norm = 50th Percentile)



Graduation and Dropout Rates For FY2005 (School Year 2004-2005)

School Districts	Students Graduated	Graduation Rate	Students Dropped Out	Dropout Rate
Carson City	511	86.2%	50	1.9%
Churchill County	267	82.9%	25	1.8%
Clark County	12,031	60.1%	5,570	7.1%
Douglas County	439	85.4%	45	1.9%
Elko County	582	80.3%	67	2.2%
Esmeralda County	-	-	-	-
Eureka County	20	90.0%	0	0.0%
Humboldt County	193	74.8%	40	4.6%
Lander County	53	75.0%	9	2.3%
Lincoln County	57	83.1%	1	0.3%
Lyon County	489	83.1%	51	2.2%
Mineral County	47	72.5%	7	4.1%
Nye County	246	57.9%	161	9.3%
Pershing County	50	88.5%	1	0.4%
Storey County	28	55.3%	7	3.7%
Washoe County	3,084	73.9%	374	2.0%
White Pine County	112	72.7%	11	2.4%
State Board Charters	33	62.9%	17	6.5%
Nevada Totals	18,242	64.9%	6,436	5.7%

Notes: Esmeralda County School District does not have any 9-12 grade schools. Data is for school year ended June 30, 2005.

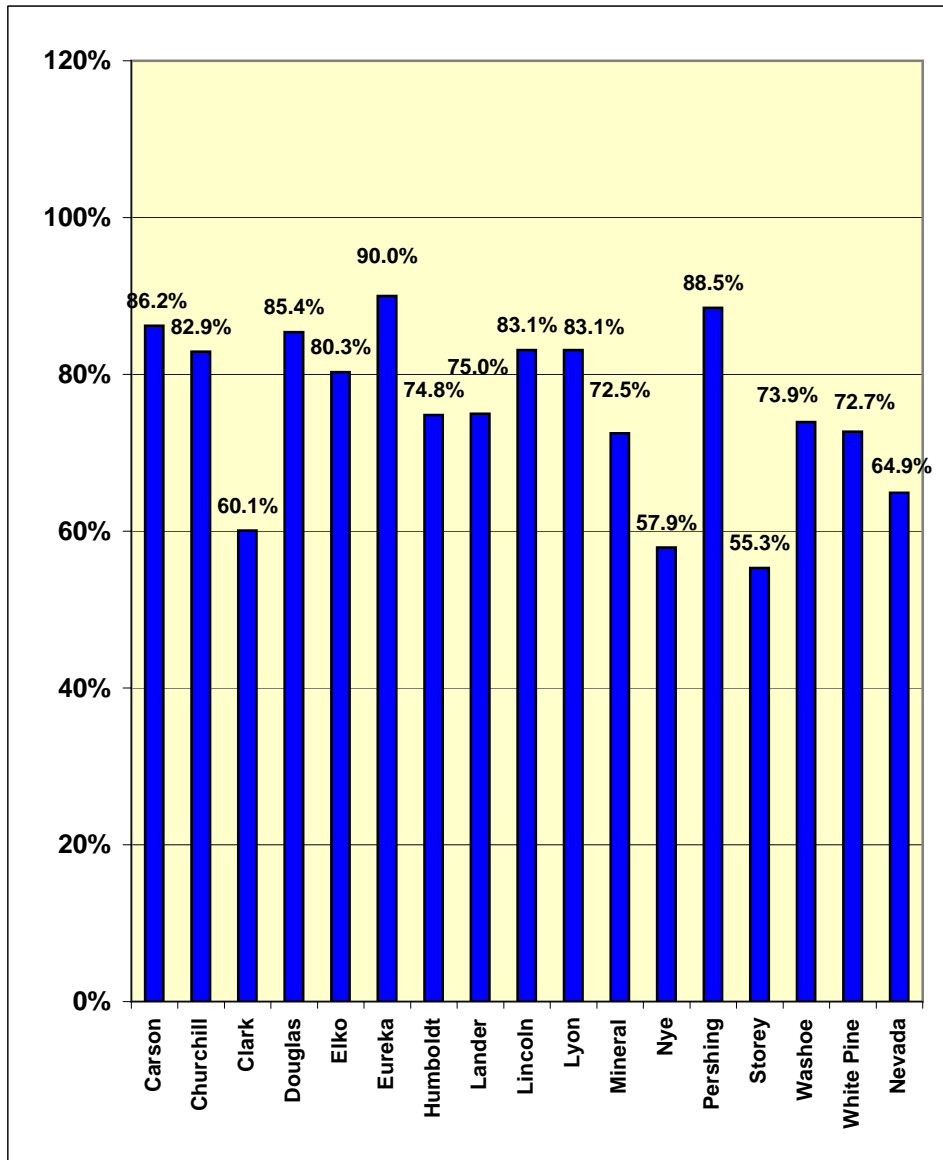
Graduation Rate = The number of graduates divided by the number of completers plus the number of dropouts for grades 9-12.

Dropouts = Students in grades 9-12 who had withdrawn from school after the first day of fall enrollment, or who had completed the previous school year, but did not return for the start of the new school year (the latter category being referred to as "non-returns").

Dropout Rate = The number of dropouts plus total non-returns divided by fall total enrollment plus total non-returns.

Source: Nevada Department of Education (NDE), Assessments and Program Accountability.

FY2005 Graduation Rates



**FY2007 Special Education Enrollments
Student Enrollments and Teacher Unit Allocations**

School Districts	Total Special Education Student Enrollment	Percent Shares of Total Special Education Students	Special Education Teacher Regular/ Discret. Units*	Percent Shares of Special Education Teacher Units	Gifted and Talented** Student Enrollment
Carson City	1,183	2.5%	82.00	2.8%	612
Churchill	665	1.4%	48.00	1.6%	90
Clark	32,178	66.7%	1,874.00	63.5%	5,891
Douglas	817	1.7%	69.00	2.3%	175
Elko	1,176	2.4%	81.00	2.7%	141
Esmeralda	10	0.0%	1.00	0.0%	-
Eureka	17	0.0%	3.00	0.1%	-
Humboldt	466	1.0%	31.00	1.1%	-
Lander	156	0.3%	13.00	0.4%	-
Lincoln	96	0.2%	17.25	0.6%	-
Lyon	1,266	2.6%	60.00	2.0%	123
Mineral	98	0.2%	12.00	0.4%	1
Nye	1,115	2.3%	58.00	2.0%	-
Pershing	146	0.3%	16.00	0.5%	5
Storey	90	0.2%	8.50	0.3%	19
Washoe	8,454	17.5%	558.00	18.9%	1,621
White Pine	197	0.4%	15.00	0.5%	-
Charters/NYTC	100	0.2%	3.00	0.1%	-
State Totals	48,230	100.0%	2,949.75	100.0%	8,678

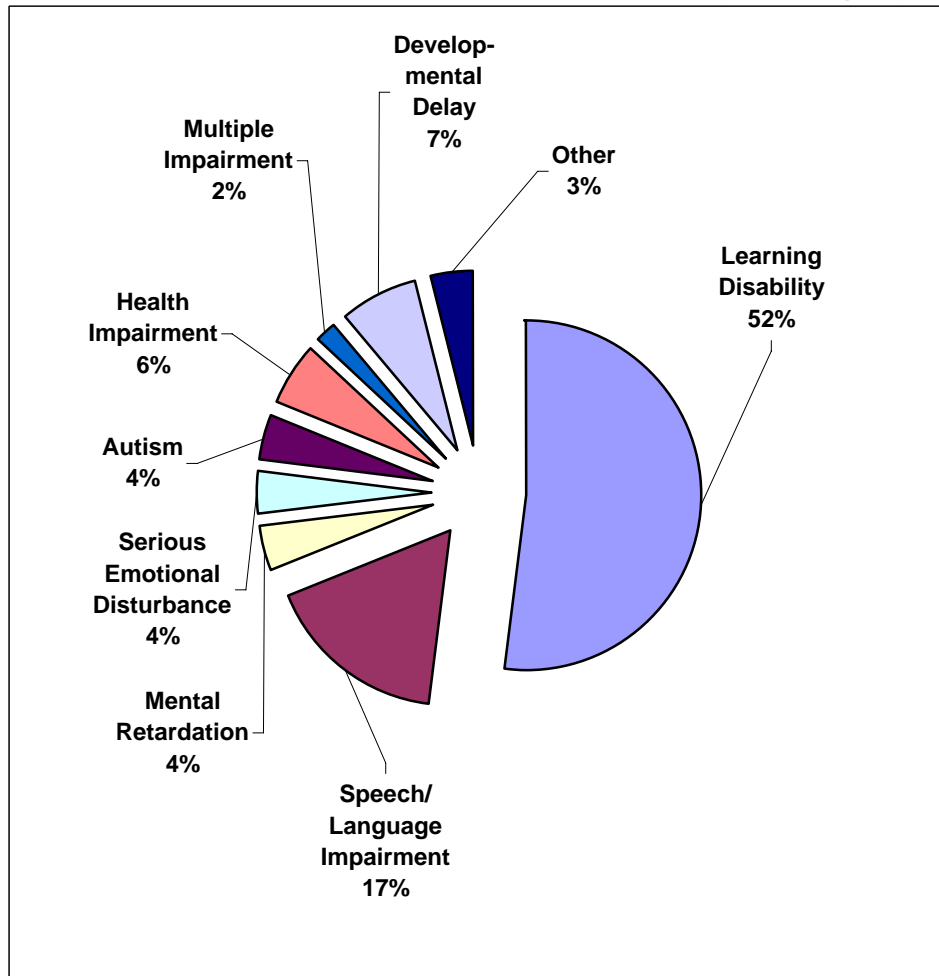
* For FY2007, 2,913 regular units and 40 discretionary units (2,953 total), with 34.25 discretionary units awarded to districts, 3 units to State sponsored charter schools, and 2.75 units to be awarded.

** **Gifted and Talented:** Students possessing or demonstrating outstanding ability in one or more of the following: general intelligence; academic aptitude in a specific area; creative thinking; productive thinking; leadership; the visual arts; or the performing arts.

Primary Disability Categories: Include mentally retarded; aurally, speech, visually, emotionally or orthopedically impaired; other health impaired; learning disabled; deaf/blind; multiple; autistic; traumatic brain injured; and developmentally delayed, ages 3-21. NYTC = Nevada Youth Training Center (located in Elko, Nevada).

Source: Nevada Department of Education, Administrative and Fiscal Services.

FY2007 Special Education Students By Category



Special Education Disability Categories: Under federal and state law, each student with a disability is entitled to receive a free appropriate public education (FAPE). Special education programs in the state serve students with identified disabilities in one of the thirteen categories established in NRS Chapter 388. School districts must provide the service necessary to assure FAPE for all students with disabilities. The graph above shows the relative percentage of special education students in specific categories.

**FY2007 'Other' School Student Enrollments
Private, Charter, and Home Schooled Enrollment Analysis**

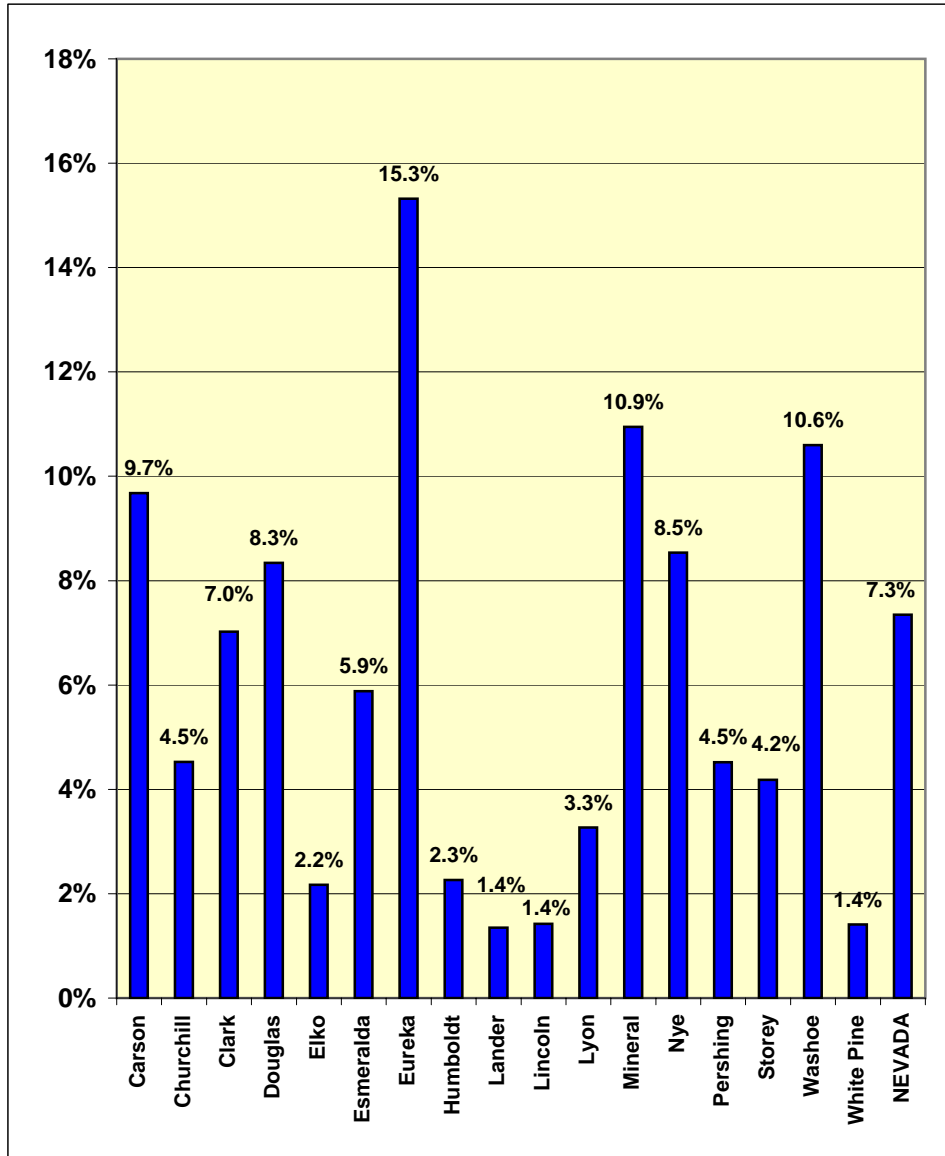
School Districts	Student Enrollments*				Percent School District** Public Enrollment
	Private Schools	Charter Schools	Home Schooled	Total 'Other' Schools	
Carson City	435	244	126	805	9.7%
Churchill	115	-	87	202	4.5%
Clark	15,756	3,516	1,983	21,255	7.0%
Douglas	184	135	252	571	8.3%
Elko	39	4	172	215	2.2%
Esmeralda	-	-	4	4	5.9%
Eureka	-	-	36	36	15.3%
Humboldt	-	-	77	77	2.3%
Lander	-	-	17	17	1.4%
Lincoln	-	-	14	14	1.4%
Lyon	17	63	220	300	3.3%
Mineral	59	-	14	73	10.9%
Nye	404	-	154	558	8.5%
Pershing	-	1	35	36	4.5%
Storey	-	-	19	19	4.2%
Washoe	3,853	2,099	730	6,682	10.6%
White Pine	-	-	20	20	1.4%
State Totals	20,862	6,062	3,960	30,884	7.3%

* **Student Enrollments** are based on the full enrollment definition which consists of all grades including pre-kindergarten (pre-K), kindergarten (K), and grades 1 through 12, inclusive (K-12), as well as ungraded students. Charter school enrollments are based on school district of residence.

** **School District:** For the purpose of this calculation, school district public school enrollment figures used for determining this ratio exclude charter school enrollments.

Source: Nevada Department of Education, Administrative and Fiscal Services.

FY2007 'Other' School Enrollment Shares



National Enrollment Growth in Public Schools

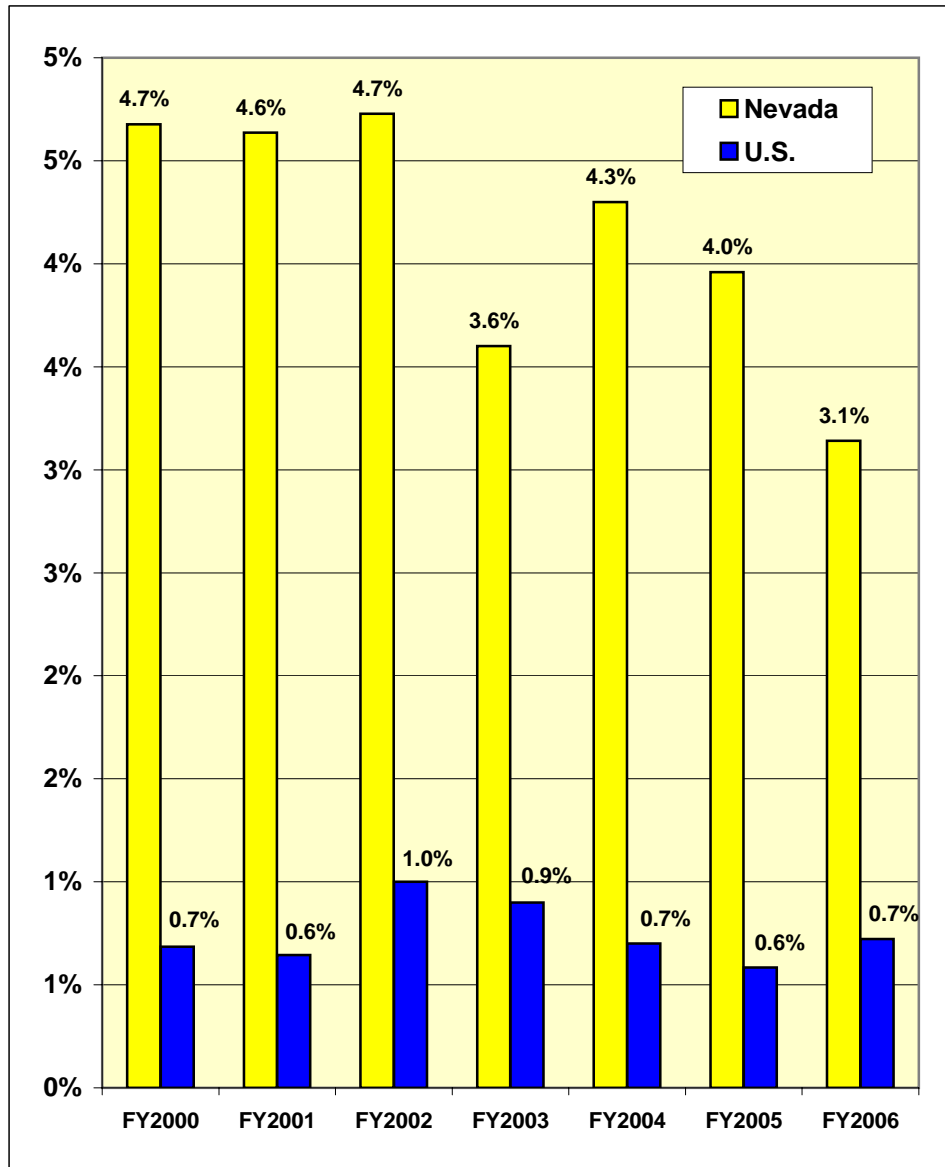
FY2006 – Ranked by Year-Over-Year Growth Rates

State	FY2006 Growth	FY2006 Rank	State	FY2006 Growth	FY2006 Rank
Nevada	3.1%	1	Nebraska	0.3%	27
Georgia	2.9%	2	Arkansas	0.3%	28
North Carolina	2.8%	3	Kentucky	0.2%	29
Texas	2.8%	4	New Jersey	0.2%	30
Arizona	2.4%	5	Oregon	0.2%	31
Colorado	1.8%	6	West Virginia	0.1%	32
California	1.6%	7	Maine	-0.1%	33
Delaware	1.5%	8	Wyoming	-0.1%	34
Florida	1.5%	9	Connecticut	-0.1%	35
Indiana	1.3%	10	Hawaii	-0.2%	36
Wisconsin	1.2%	11	New York	-0.2%	37
Washington	1.2%	12	Minnesota	-0.3%	38
Michigan	1.1%	13	Kansas	-0.3%	39
Iowa	1.1%	14	Massachusetts	-0.4%	40
Alabama	1.0%	15	Mississippi	-0.5%	41
Ohio	0.9%	16	Vermont.....	-0.6%	42
Maryland	0.9%	17	New Hampshire	-0.6%	43
Oklahoma	0.8%	18	South Dakota	-0.8%	44
Virginia	0.8%	19	Pennsylvania	-0.8%	45
South Carolina	0.8%	20	Montana	-0.9%	46
Tennessee	0.7%	21	District of Columbia ..	-1.3%	47
New Mexico	0.6%	22	Utah	-1.9%	48
Missouri	0.6%	23	North Dakota	-2.2%	49
Idaho	0.5%	24	Illinois	-3.1%	50
Rhode Island	0.4%	25	Louisiana	-9.6%	51
Alaska	0.4%	26	U.S. Average	0.7%	

FY2006 covers the school year of July 1, 2005 through June 30, 2006. Growth is year-over-year.

Source: National Education Association (NEA), "Rankings & Updates, Fall 2006 Update".

Nevada-U.S. Enrollment Growth Rates



Student-Teacher Ratios in Public Schools

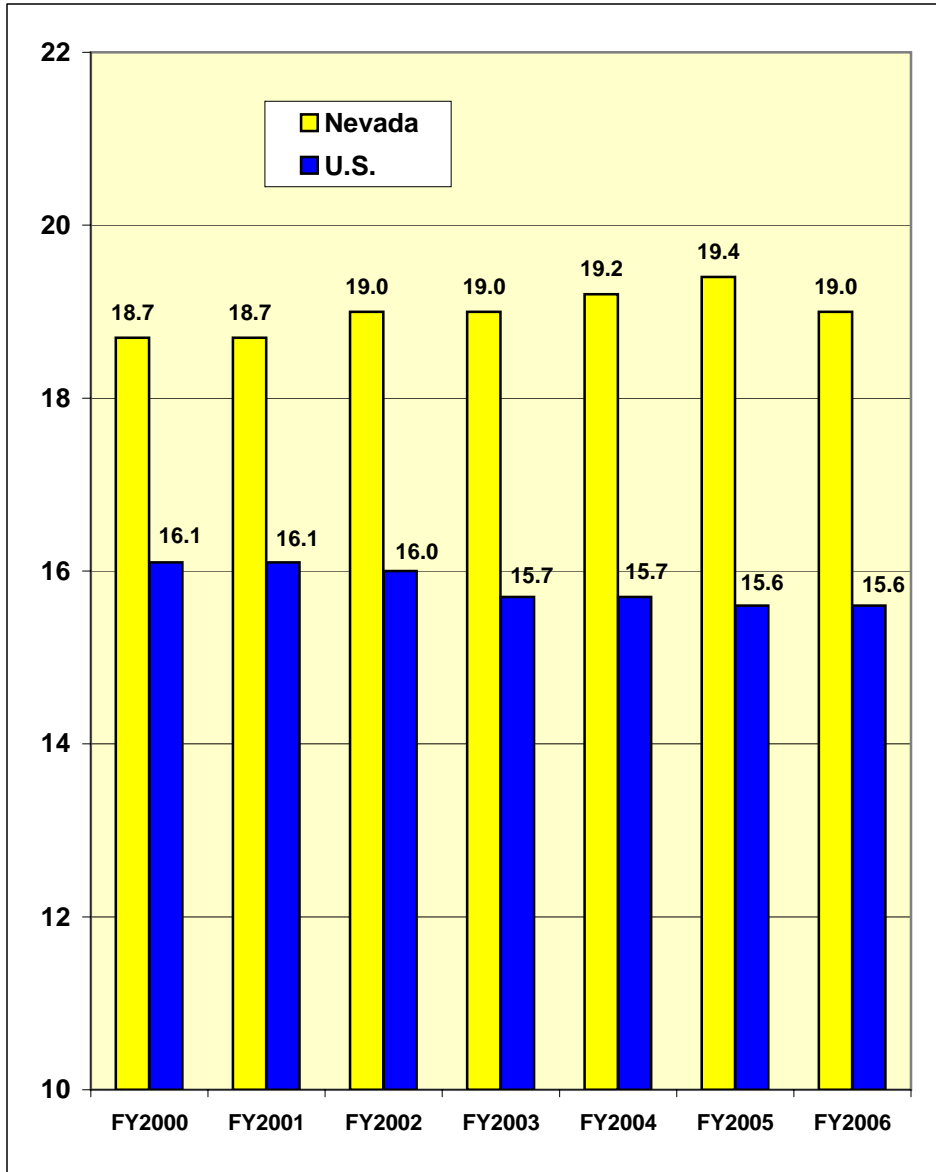
FY2006 – Ranked by Student-Teacher Ratios

State	FY2006 Ratio	FY2006 Rank	State	FY2006 Ratio	FY2006 Rank
Utah	23.0	1	Louisiana	14.8	27
Arizona	21.8	2	South Carolina	14.8	28
California	20.0	3	Pennsylvania	14.7	29
Oregon	19.5	4	Wisconsin	14.7	30
Washington	19.3	5	North Carolina	14.7	31
Nevada	19.0	6	Kansas	14.4	32
Michigan	17.8	7	Massachusetts	14.3	33
Idaho	17.6	8	West Virginia	14.1	34
Indiana	17.1	9	Montana	14.1	35
Alaska	16.7	10	Iowa	13.7	36
Colorado	16.6	11	Nebraska	13.6	37
Florida	16.4	12	Missouri	13.6	38
Minnesota	16.3	13	Arkansas	13.5	39
Kentucky	16.2	14	South Dakota	13.5	40
Hawaii	16.0	15	New Hampshire	13.3	41
Mississippi	15.7	16	Virginia	13.2	42
Tennessee	15.7	17	Connecticut	13.1	43
Delaware	15.6	18	North Dakota	12.8	44
Ohio	15.6	19	Wyoming	12.6	45
Illinois	15.4	20	New Jersey	12.6	46
Oklahoma	15.2	21	Maine	12.5	47
Maryland	15.1	22	District of Columbia ...	12.4	48
Texas	14.9	23	New York	12.3	49
New Mexico	14.9	24	Rhode Island	11.1	50
Alabama	14.9	25	Vermont.....	10.5	51
Georgia	14.8	26	U.S. Average.....	15.6	

FY2006 covers the school year of July 1, 2005 through June 30, 2006. Growth is year-over-year.

Source: National Education Association (NEA), "Rankings & Updates, Fall 2006 Update".

Nevada-U.S. Student-Teacher Ratios



Current Expenditures per Student

FY2006 – Ranked by Current Expenditures per Student

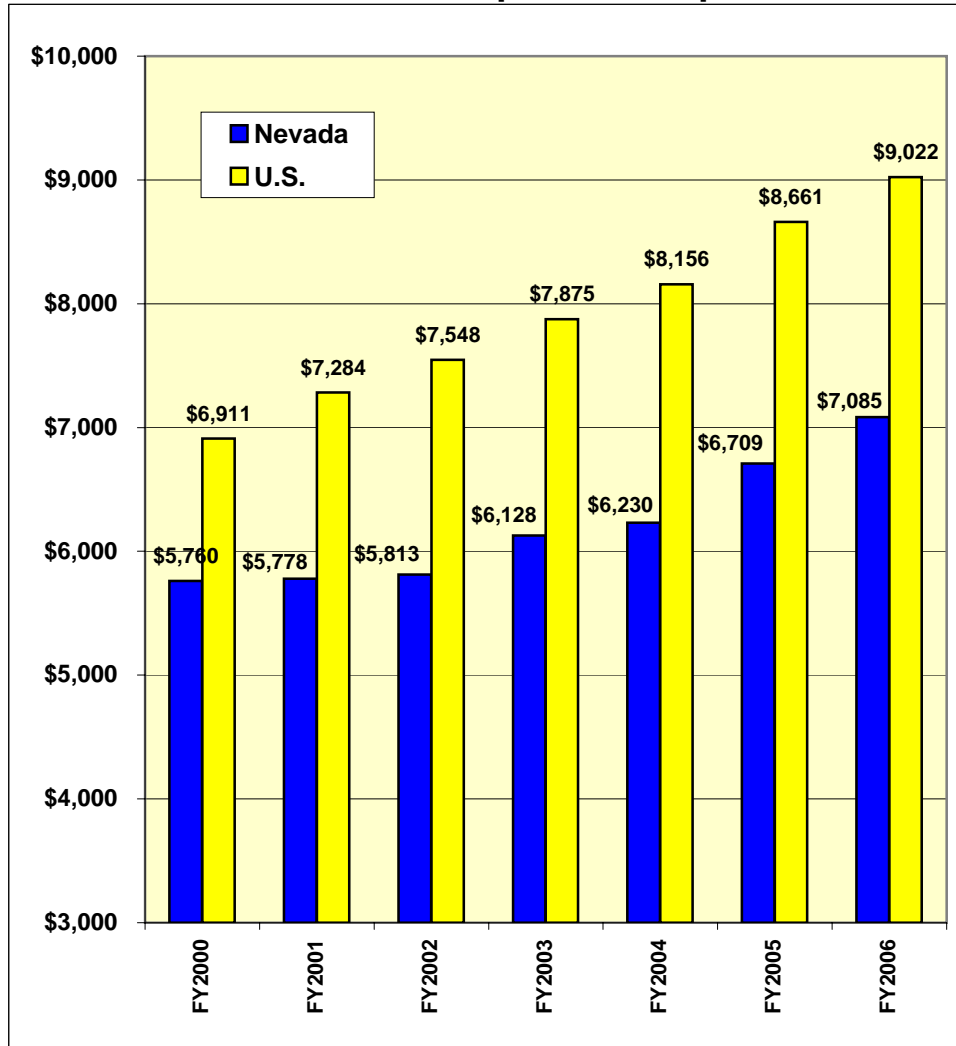
State	FY2006 Level	FY2006 Rank	State	FY2006 Level	FY2006 Rank
District of Columbia ...	\$15,864	1	South Carolina ...	\$8,531	27
New Jersey	13,781	2	Montana	8,361	28
New York	13,551	3	Colorado	8,277	29
Connecticut	12,436	4	California	8,205	30
Vermont.....	12,326	5	Kentucky	8,195	31
Massachusetts	12,276	6	Kansas	8,178	32
Wyoming	11,971	7	Washington	8,166	33
Delaware	11,423	8	Oregon	8,141	34
Maine	11,285	9	Nebraska	7,980	35
Rhode Island	11,089	10	South Dakota	7,911	36
Illinois	10,271	11	Iowa	7,807	37
New Hampshire	10,206	12	North Dakota	7,760	38
Alaska	10,171	13	Missouri	7,680	39
Wisconsin	10,072	14	Florida	7,650	40
Michigan	10,069	15	North Carolina ...	7,465	41
Pennsylvania	10,052	16	Texas	7,397	42
Ohio	10,034	17	Alabama	7,303	43
West Virginia	9,790	18	Nevada	7,085	44
Minnesota	9,675	19	Tennessee	7,079	45
Maryland	9,622	20	Idaho	6,966	46
Virginia	9,275	21	Mississippi	6,763	47
Georgia	9,147	22	Oklahoma	6,745	48
Indiana	8,978	23	Arkansas	6,309	49
Louisiana	8,812	24	Arizona	5,585	50
Hawaii	8,745	25	Utah	5,347	51
New Mexico	8,629	26	U.S. Average.....	\$9,022	

FY2006 covers the school year of July 1, 2005 through June 30, 2006. Growth is year-over-year.

Note: Current expenditures include all state, local, and federal government expenditures for current operating expenses; excludes capital costs and expenses related to interest and debt service.

Source: National Education Association (NEA), "Rankings & Updates, Fall 2006 Update".

Nevada-U.S. Current Expenditures per Student



Nevada-U.S. Average Expenditure per Student "Gap"						
FY2000	FY2001	FY2002	FY2003	FY2004	FY2005	FY2006
\$ (1,151)	\$ (1,506)	\$ (1,735)	\$ (1,747)	\$ (1,926)	\$ (1,952)	\$ (1,937)
Change:	30.8%	15.2%	0.7%	10.2%	1.3%	-0.8%

Capital Expenditures per Student

FY2006 – Ranked by Capital Expenditures per Student

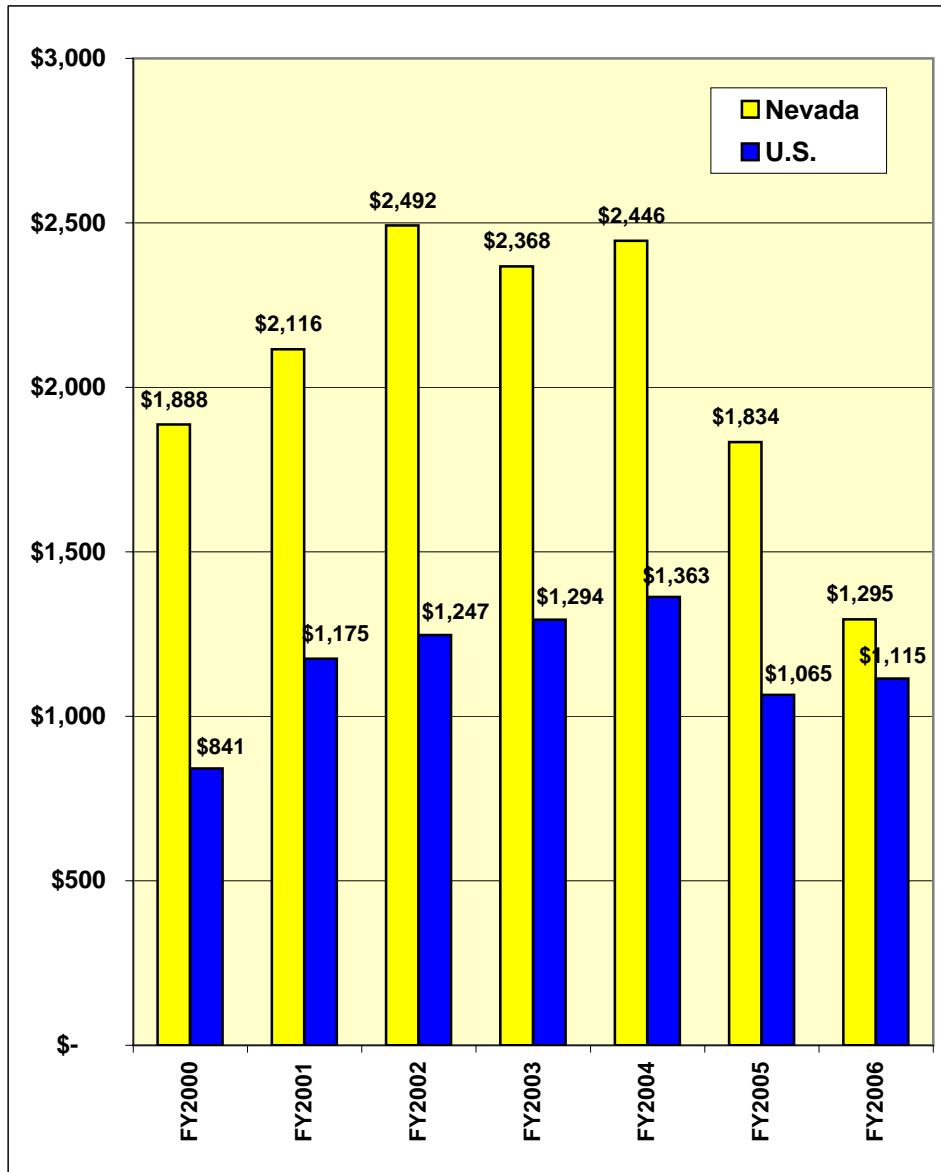
State	FY2006 Level	FY2006 Rank	State	FY2006 Level	FY2006 Rank
District of Columbia ..	\$3,701	1	New York	\$ 889	27
Washington	2,579	2	Arkansas	887	28
Wyoming	2,254	3	Maine	841	29
California	1,748	4	North Carolina	826	30
Delaware	1,667	5	Indiana	807	31
Florida	1,625	6	Missouri	805	32
Minnesota	1,614	7	Arizona	773	33
New Mexico	1,604	8	New Hampshire	768	34
Pennsylvania	1,500	9	Maryland	752	35
South Carolina	1,490	10	Vermont.....	702	36
Nevada	1,295	11	Hawaii	654	37
Texas	1,243	12	Mississippi	644	38
Louisiana	1,195	13	Oklahoma	643	39
Kansas	1,177	14	Illinois	633	40
Massachusetts	1,170	15	Alabama	614	41
Colorado	1,149	16	Wisconsin	513	42
Iowa	1,102	17	Kentucky	471	43
North Dakota	1,097	18	Nebraska	445	44
Connecticut	1,091	19	West Virginia	387	45
Ohio	1,086	20	Alaska	289	46
Oregon	1,074	21	Idaho	271	47
Georgia	1,065	22	Montana	269	48
Utah	950	23	Rhode Island	249	49
Virginia	922	24	New Jersey	179	50
South Dakota	904	25	Tennessee	83	51
Michigan	899	26	U.S. Average.....	\$1,115	

FY2006 covers the school year of July 1, 2005 through June 30, 2006. Growth is year-over-year.

Capital expenditures include long-term construction costs and interest on school debt.

Source: National Education Association (NEA), "Rankings & Updates, Fall 2006 Update".

Nevada-U.S. Capital Expenditures per Student



Total Expenditures per Student
FY2006 – Ranked by Total Expenditures per Student

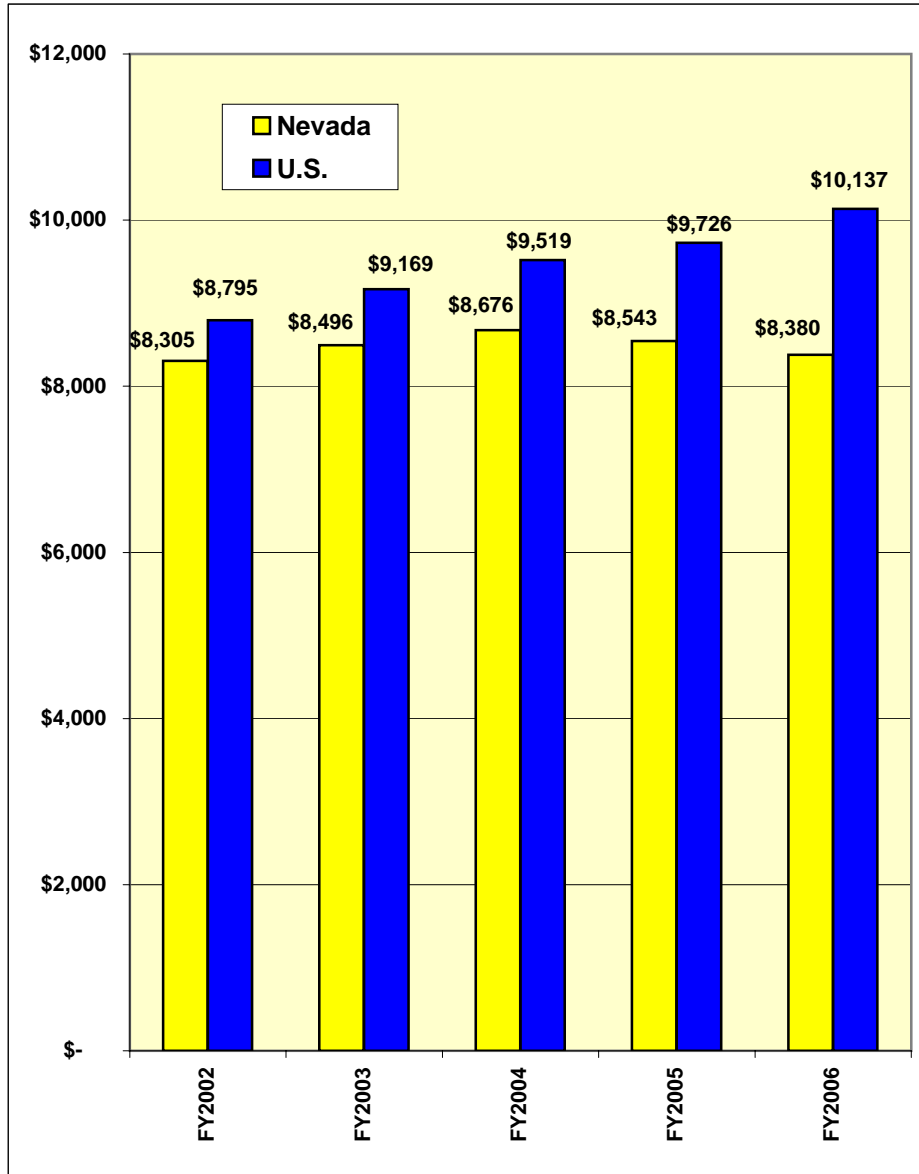
State	FY2006 Level	FY2006 Rank	State	FY2006 Level	FY2006 Rank
District of Columbia ..	\$19,565	1	California	\$9,953	27
New York	14,441	2	Indiana	9,785	28
Wyoming	14,225	3	Colorado	9,427	29
New Jersey	13,961	4	Hawaii	9,399	30
Connecticut	13,527	5	Kansas	9,355	31
Massachusetts	13,446	6	Florida	9,275	32
Delaware	13,090	7	Oregon	9,215	33
Vermont.....	13,028	8	Iowa	8,909	34
Maine	12,126	9	North Dakota	8,857	35
Pennsylvania	11,552	10	South Dakota	8,815	36
Rhode Island	11,338	11	Kentucky	8,665	37
Minnesota	11,288	12	Texas	8,640	38
Ohio	11,120	13	Montana	8,630	39
New Hampshire	10,973	14	Missouri	8,485	40
Michigan	10,968	15	Nebraska	8,425	41
Illinois	10,904	16	Nevada	8,380	42
Washington	10,746	17	North Carolina	8,291	43
Wisconsin	10,584	18	Alabama	7,918	44
Alaska	10,460	19	Mississippi	7,407	45
Maryland	10,374	20	Oklahoma	7,389	46
New Mexico	10,233	21	Idaho	7,237	47
Georgia	10,212	22	Arkansas	7,195	48
Virginia	10,197	23	Tennessee	7,162	49
West Virginia	10,176	24	Arizona	6,358	50
South Carolina	10,021	25	Utah	6,297	51
Louisiana	10,007	26	U.S. Average.....	\$10,137	

FY2006 covers the school year of July 1, 2005 through June 30, 2006. Growth is year-over-year.

Total expenditures include both current and capital expenditures as defined previously.

Source: National Education Association (NEA), "Rankings & Updates, Fall 2006 Update".

Nevada-U.S. Total Expenditures per Student



NOTES

The "Nevada Education QuickSTATS" is available free of charge to individuals for single copy orders. Please contact NDE's Administrative and Fiscal Services office for ordering information and to obtain cost estimates related to multiple-copy orders.

Interested persons may also wish to inquire about receiving the companion product, the "Nevada Education QuickFACTS".

NEVADA DEPARTMENT of EDUCATION

Administrative and Fiscal Services

Phone: 775.687.9102

FAX: 775.687.9101

Internet Web Page: <http://www.doe.nv.gov>

Nevada Report Card: <http://www.nevadareportcard.com>